

## INDEX OF STANDARD DETAILS

1. Blow out patch - small holes
2. Blow out patch - large holes
3. Flush patch - small
4. Wall penetrations
5. Wall penetrations
6. Multiple wall penetrations
7. Junction box stud wall detail
8. Recessed wall cabinet
9. Smoke and rated partition adjacent to beam - 6" or more
10. Two hour rated shaft walls
11. Rated partition under beam
12. Smoke and rated partition adjacent to beam - 4" to 6"
13. Smoke and rated partition adjacent to beam - 2" to 4"
14. Rated partition under beam and joist
15. Rated wall perpendicular to beam
16. Bar joist wall penetration - blow out patch
17. Bar joist wall penetration - flush patch
18. Rated wall parallel to deck - sprayed
19. Rated wall parallel to deck - unsprayed
20. Priority wall legend
21. Fire / smoke wall - plan view detail
22. Horizontal joint requirements above suspended ceilings
23. Joint requirements - 2 hour wall
24. Smoke resistant and hazardous function separation walls
25. Wall penetration - rated ceiling assembly
26. Wall penetration - rated ceiling assembly
27. Wall section - smoke and one hour
28. Wall section - smoke and one hour
29. Wall section - rated block
30. Wall section - 2 hour plaster shaft wall
31. Access panel installation
32. Bulkhead at assembly transition
33. Damper sleeve installation
34. Rated ceiling penetration
35. Membrane edge support
36. Temporary 1 hour partition between construction and occupied areas

## INTRODUCTION

In late 1982, a south Florida hospital failed the State's final inspection. The obvious cause was the drywall installation. The "HRS" survey team was Joe Alcure, George Hapsis, Bob Smyre, Dr. Ludwig and Richard Rosenvold. A chalkboard was brought into the building under construction. Alcure identified that the biggest problems were : 1. Holes in the rated walls; and 2. Insufficient screws to attach the drywall boards to the steel framing.

The solution to Number 2 was obvious. More screws were added to the drywall and to the steel framing as required by the wall rating.

The solution to the Number 1 was to cut a piece of scrap drywall material larger than the hole to be repaired, mud this patch and, after applying it over the hole, to add "lamating" drywall screws at 6" on center around the edge of the this patch.

The patch further developed as we learned that screws should be inset at least 3 inches to control a tendency to tear out of a non-hardened edge of drywall.

It was further found that when a larger patch was required, it should be supported by screwing it into the steel framing. We see this indication on Detail 2.

Where pipe or conduits were penetrating the rated partition, the patch was cut in half and tightly fitted around the pipe or conduit. Detail 3 is accepted as a means to provide a flush finished wall especially below finished ceilings.

As particular construction problems are presented to the field staff, much time and consideration is given to finding solutions. When the Office of Plans and Construction, and national consultants are in general agreement, a new "detail" is produced and then distributed.

These AHCA Standard Details will be acceptable to the Office of Plans and Construction as a solution to a repair or a construction problem when used as described.

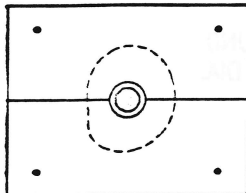
These details are untested by any independent testing laboratory and in no way imply that they exceed local jurisdictional rights.

Although some of these details such as the "blow out" patch have been tested by some drywall manufacturers, these details will generally not be found in any tested assemblies. Therefore, local jurisdictions may enforce more stringent requirements.





SMALL OPENINGS MAY BE PATCHED USING JOINT COMPOUND, CAULK, OR BLOW-OUT PATCHES.



LARGE OPENINGS REQUIRE A BLOW-OUT PATCH OR WALL REPAIR.

## SMOKE RESISTANT WALLS



1/2" MAXIMUM

UP TO 1/2" OPENINGS MAY BE FILLED FULL DEPTH OF DRYWALL WITH ACOUSTICAL SEALANT. STRIKE OFF AT FACE OF DRYWALL. DO NOT SPREAD BEYOND OPENING. ALTERNATIVELY, A PROPRIETARY SYSTEM MAY BE USED.

UP TO 1/4" OPENINGS MAY BE FILLED WITH JOINT COMPOUND.

UP TO 1/8" OPENINGS DO NOT REQUIRE ANY TREATMENT.

LARGER THAN 1/2" OPENINGS REQUIRE A BLOW-OUT PATCH (SEE DETAIL SHEET 2). SOME LOCAL JURISDICTIONS DO NOT ALLOW THE BLOW-OUT PATCH.

## 30-MIN., 1-HR. & 2-HR. RATED WALLS (FIRE, FIRE & SMOKE)

3- AND 4-HR. WALLS REQUIRE THE USE OF A PROPRIETARY SYSTEM

## A.H.C.A. STANDARD DETAIL NO. 1

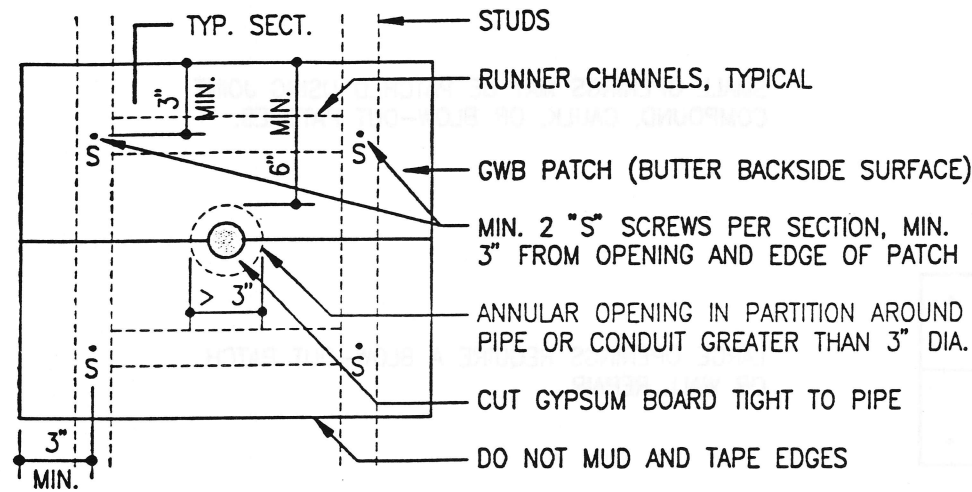
OFFICE OF PLANS AND CONSTRUCTION  
AGENCY FOR HEALTH CARE ADMINISTRATION  
STATE OF FLORIDA

Issued: Oct. 12, 1993

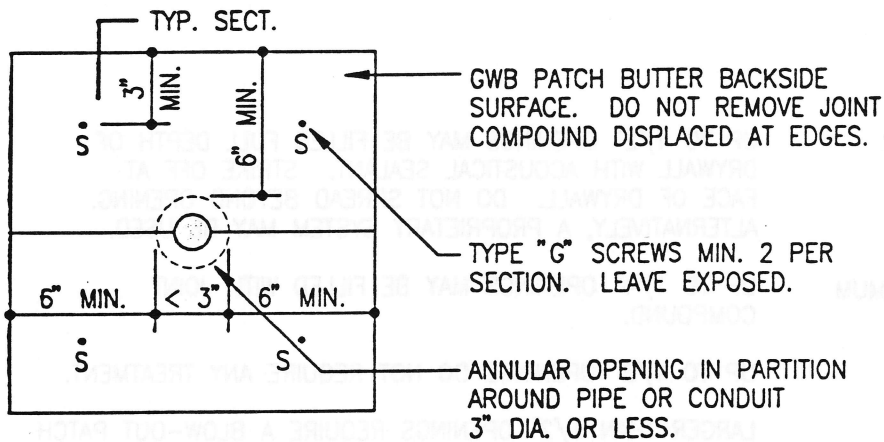
Revised: \_\_\_\_\_

\_\_\_\_\_

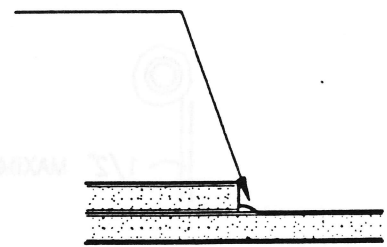
\_\_\_\_\_



HOLES OVER 3" DIA.



HOLES UP TO 3" DIA.



HOLES UP TO 3" DIA.

### BLOW-OUT PATCH

ONLY 1 LAYER ON EACH SIDE OF WALL REQUIRED FOR 1 OR 2 HOUR WALLS.  
BLOW-OUT PATCH IS NOT ACCEPTABLE ON WALLS RATED AT 3 OR 4 HOURS.

#### NOTES:

1. BUTTER ENTIRE BACK SIDE OF PATCH WITH JOINT COMPOUND.
2. LEAVE ALL SCREWS EXPOSED.

## A.H.C.A. STANDARD DETAIL NO. 2

OFFICE OF PLANS AND CONSTRUCTION  
AGENCY FOR HEALTH CARE ADMINISTRATION  
STATE OF FLORIDA

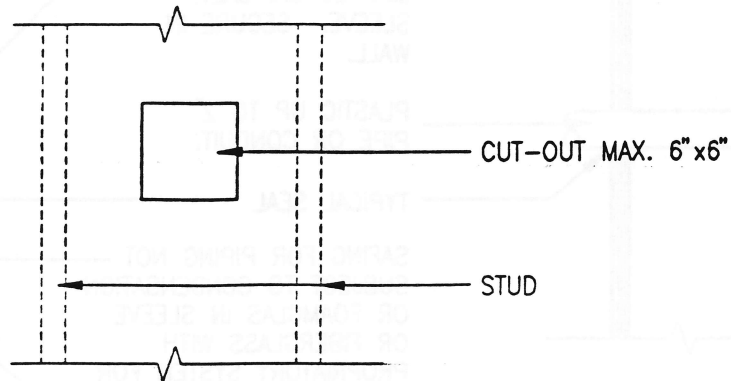
Issued: Oct. 12, 1993

Revised: \_\_\_\_\_

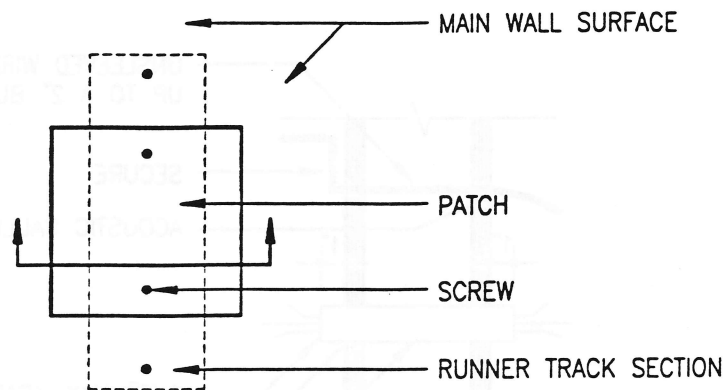
\_\_\_\_\_

\_\_\_\_\_

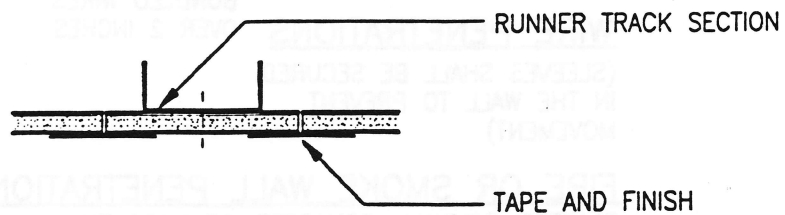
\_\_\_\_\_



PARTIAL ELEVATION



PARTIAL ELEVATION



SECTION

FLUSH PATCH - SMALL

# **A.H.C.A. STANDARD DETAIL NO. 3**

OFFICE OF PLANS AND CONSTRUCTION  
 AGENCY FOR HEALTH CARE ADMINISTRATION  
 STATE OF FLORIDA

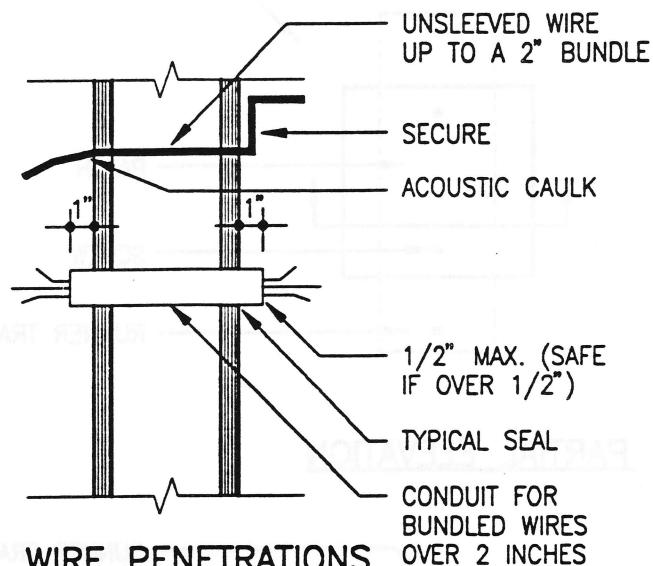
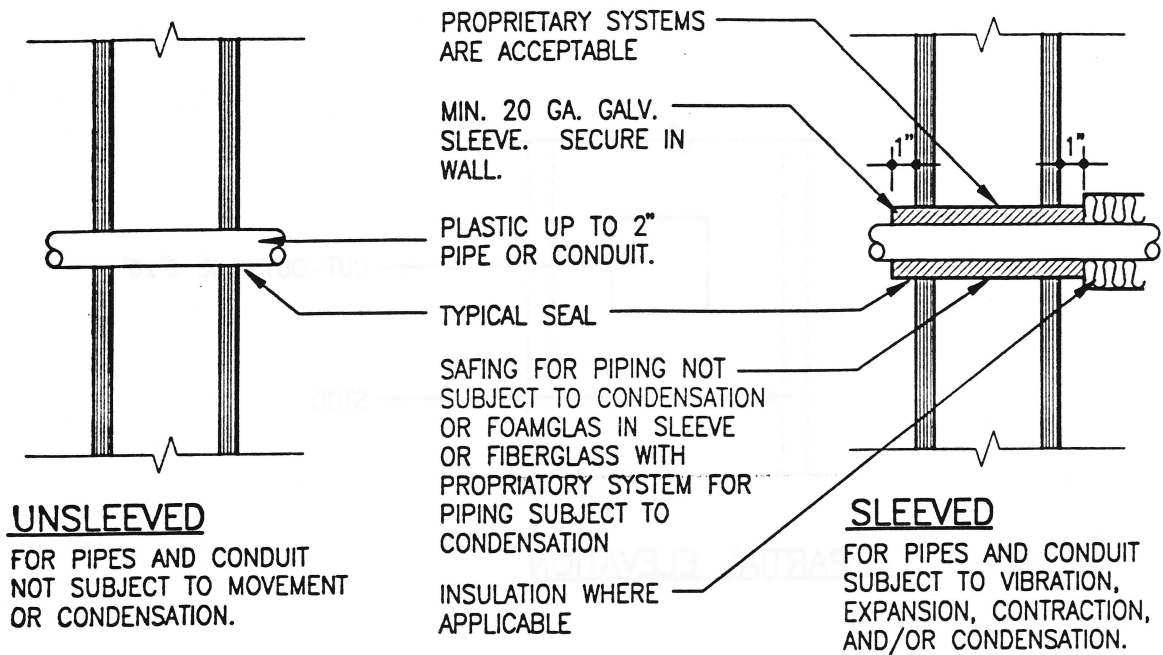
Issued: Oct. 12, 1993

Revised:

\_\_\_\_\_

\_\_\_\_\_

\_\_\_\_\_



#### WIRE PENETRATIONS

(SLEEVES SHALL BE SECURED  
IN THE WALL TO PREVENT  
MOVEMENT)

#### FIRE OR SMOKE WALL PENETRATIONS

PLASTER, DRYWALL, CONCRETE, OR MASONRY

TYPICAL SEAL AS FOLLOWS:

LESS THAN 1/2" = ACOUSTIC CAULK OR DRYWALL  
JOINT COMPOUND (NO TAPE)

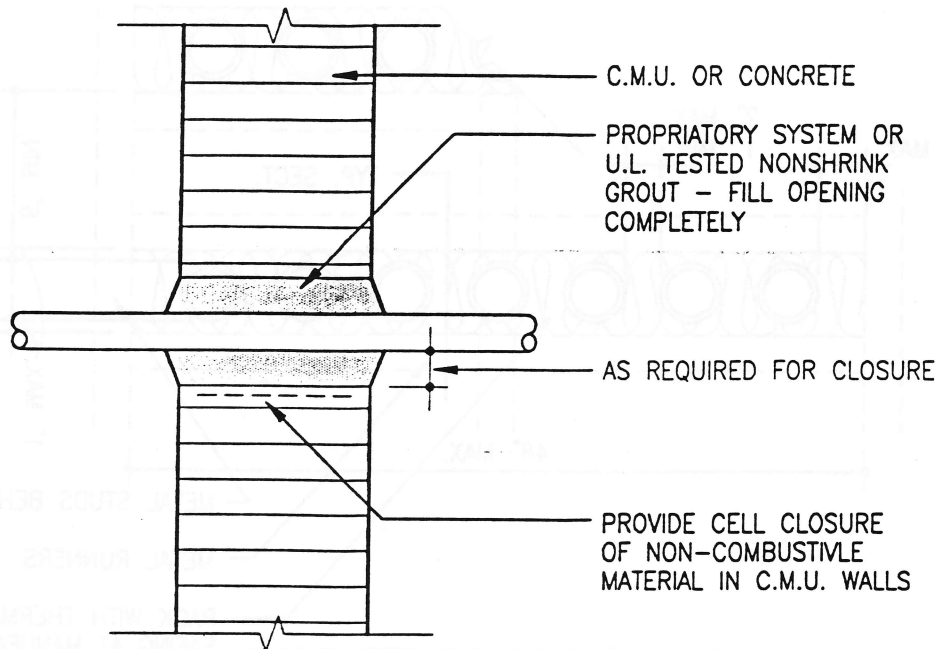
MORE THAN 1/2" = BLOW-OUT PATCH OR  
PROPRIETARY SYSTEM.

## A.H.C.A. STANDARD DETAIL NO. 4

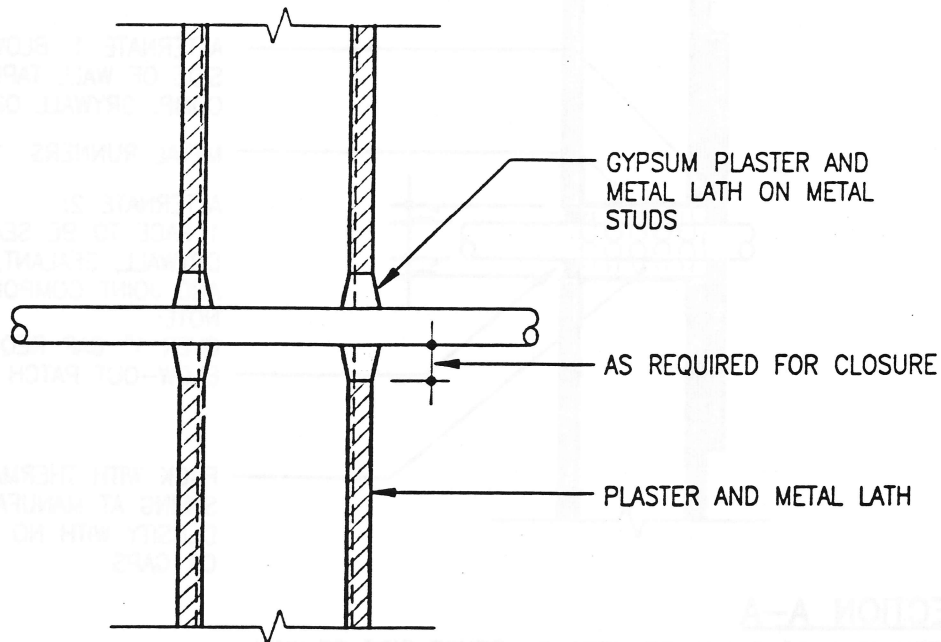
OFFICE OF PLANS AND CONSTRUCTION  
AGENCY FOR HEALTH CARE ADMINISTRATION  
STATE OF FLORIDA

Issued: Oct. 12, 1993

Revised: \_\_\_\_\_



### CONCRETE MASONRY UNITS OR SOLID CONCRETE WALLS



### GYPSUM PLASTER, METAL LATH AND METAL STUD PARTITIONS

## A.H.C.A. STANDARD DETAIL NO. 5

OFFICE OF PLANS AND CONSTRUCTION  
AGENCY FOR HEALTH CARE ADMINISTRATION  
STATE OF FLORIDA

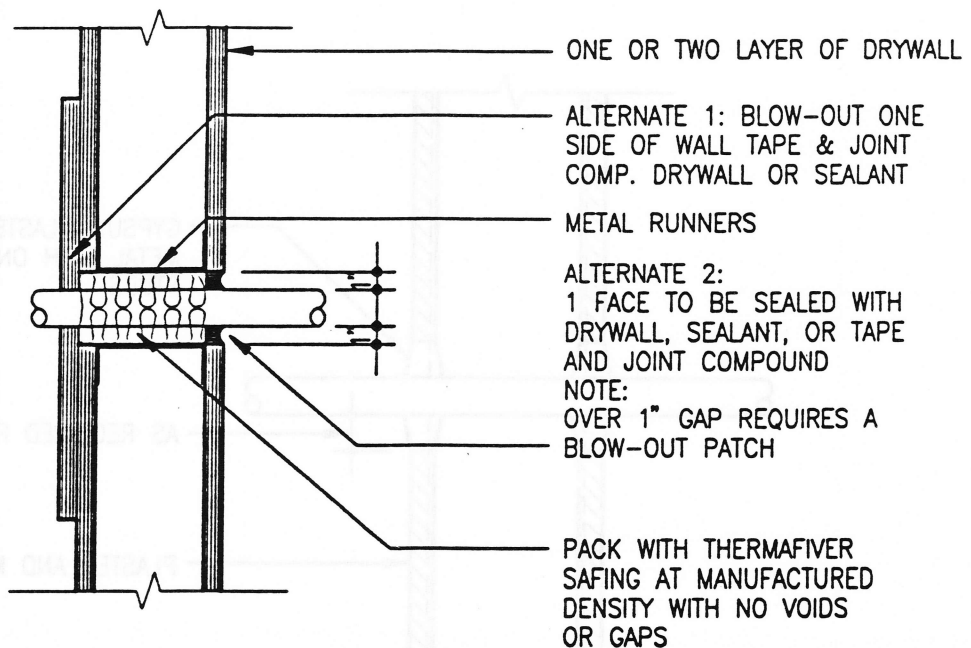
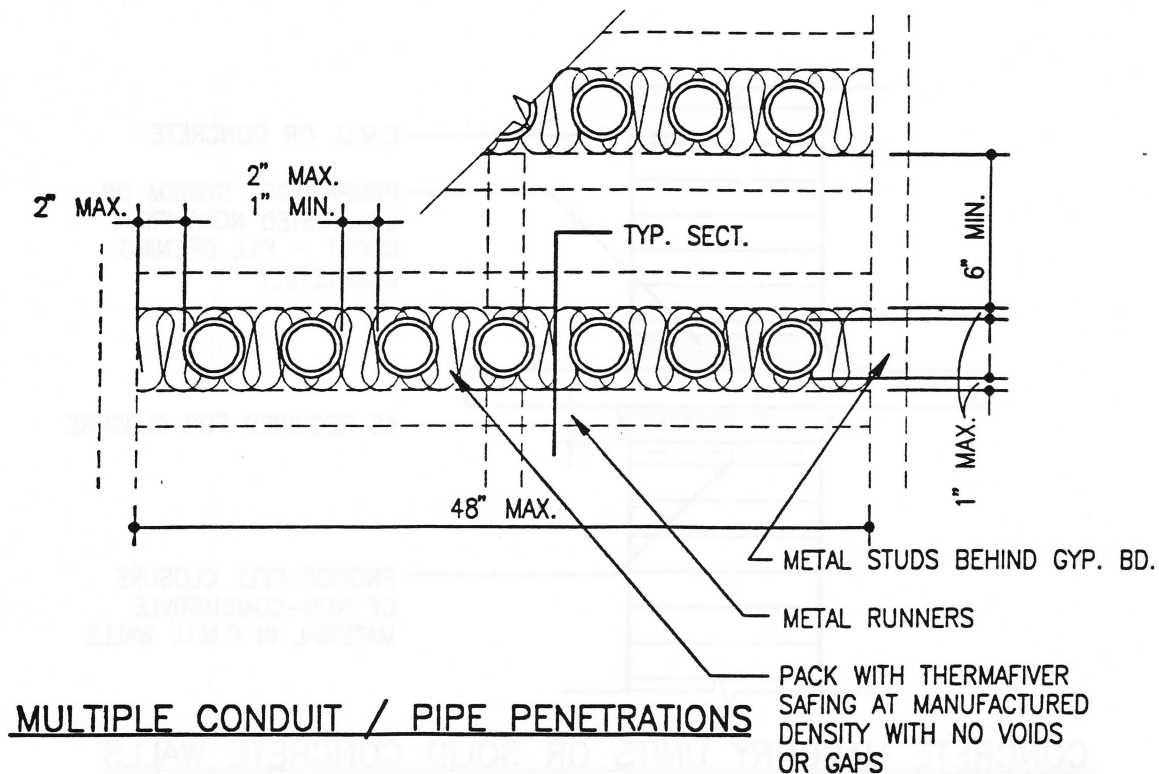
Issued: Oct. 12, 1993

Revised:

\_\_\_\_\_

\_\_\_\_\_

\_\_\_\_\_



### **SECTION A-A**

ALTERNATE 1 OR 2 MAY BE USED ON EITHER SIDE OF WALL.  
ONE SIDE OF PENETRATION MAY REMAIN OPEN.

## **A.H.C.A. STANDARD DETAIL NO. 6**

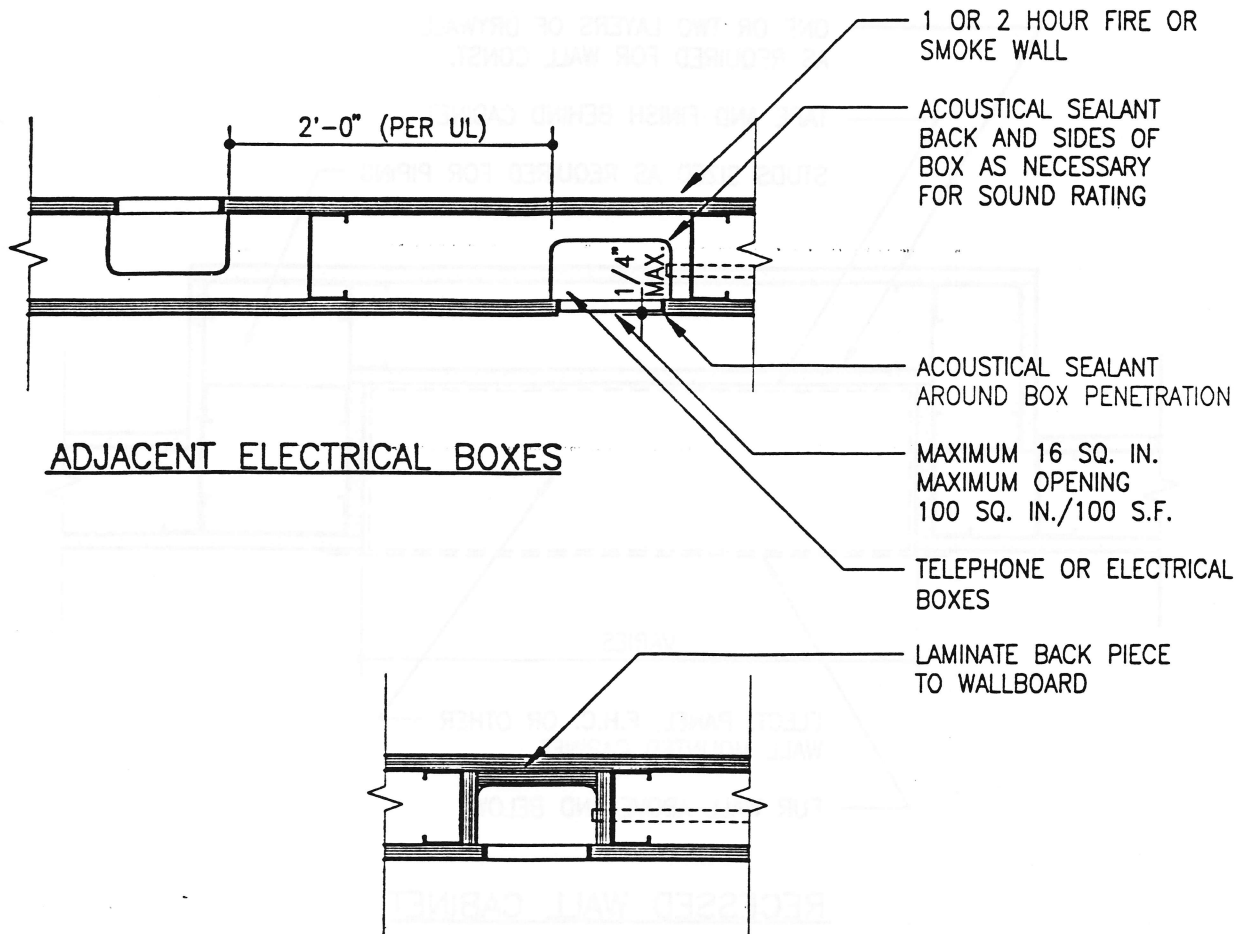
OFFICE OF PLANS AND CONSTRUCTION  
AGENCY FOR HEALTH CARE ADMINISTRATION  
STATE OF FLORIDA

Issued: Oct. 12, 1993

Revised: \_\_\_\_\_

\_\_\_\_\_  
\_\_\_\_\_  
\_\_\_\_\_





### SHALLOW FIVE SIDE BOX DETAIL

REQUIRED WHERE BOX EXCEEDS 16 SQ. INCHES  
OR AGGREGATE OF BOXES EXCEEDS 100 SQ. IN./  
100 SF OF WALL AREA.

### ELECTRICAL JUNCTION BOXES

WHEN A METALLIC JUNCTION BOX FOR ELECTRICAL RECEPTACLES OR SWITCHES IS CONTAINED WITHIN A RATED WALL OF GYPSUM DRYWALL CONSTRUCTION AND AN OPENING IS PROVIDED FOR THE BOX IN THE SURFACE OF THAT WALL, THE AREA OF THE OPENING MAY NOT EXCEED 16 SQUARE INCHES, UNLESS THE JUNCTION BOX IS ENCLOSED BY A "5-SIDED BOX" (SEE APPROVED DETAILS).

THE AGGREGATE AREA OF ALL SUCH JUNCTION BOXES IN A RATED WALL NOT ENCLOSED BY "5-SIDED BOXES" DESCRIBED ABOVE SHALL NOT EXCEED 100 SQUARE INCHES IN 100 SQUARE FEET OF WALL AREA AS MEASURED FROM FLOOR TO STRUCTURAL DECK OR RATED MEMBRANE.

JUNCTION BOXES WITH OPENINGS ON OPPOSITE FACES OF RATED WALLS SHALL HAVE A HORIZONTAL SEPARATION OF 24 INCHES AS A MINIMUM, REGARDLESS OF BOX SIZE, UNLESS ENCLOSED BY "5-SIDED BOXES."

LOCATIONS OF STUDS DO NOT HAVE ANY BEARING ON THE ABOVE REQUIREMENTS, NOR DOES THE USE OF MINERAL WOOL FIRE SAFING ALTER THESE REQUIREMENTS.

## **A.H.C.A. STANDARD DETAIL NO. 7**

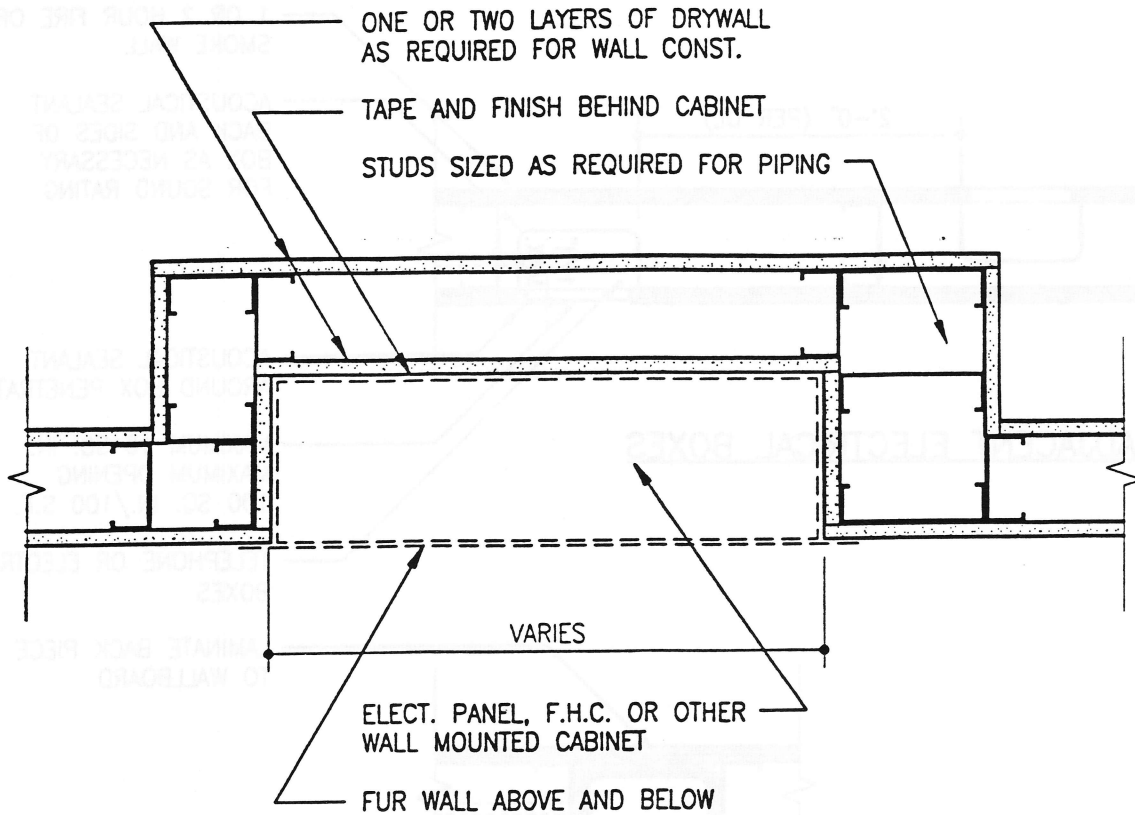
OFFICE OF PLANS AND CONSTRUCTION  
AGENCY FOR HEALTH CARE ADMINISTRATION  
STATE OF FLORIDA

Issued: Oct. 12, 1993

Revised: \_\_\_\_\_

\_\_\_\_\_

\_\_\_\_\_



### RECESSED WALL CABINET

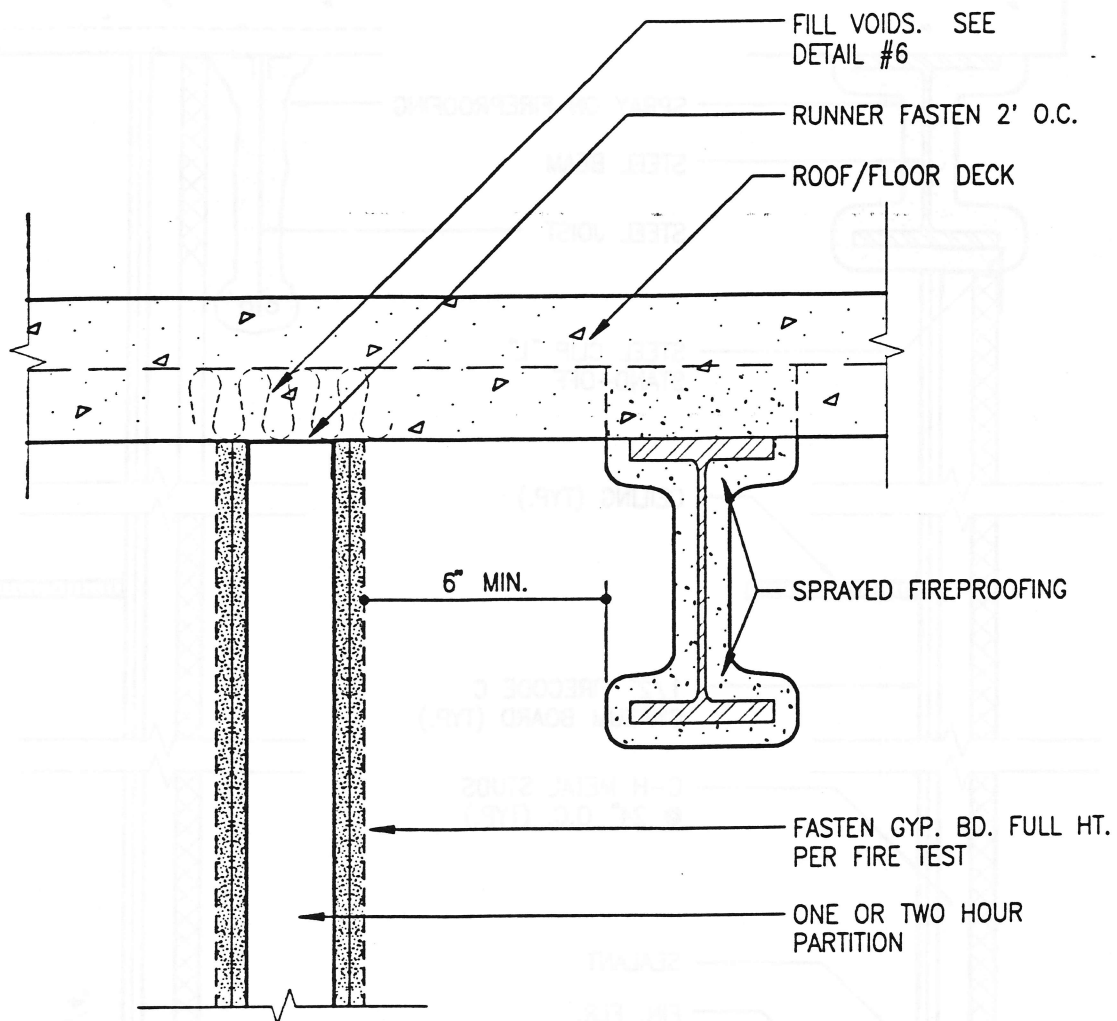
## A.H.C.A. STANDARD DETAIL NO. 8

OFFICE OF PLANS AND CONSTRUCTION  
AGENCY FOR HEALTH CARE ADMINISTRATION  
STATE OF FLORIDA

Issued: Oct. 12, 1993

Revised: \_\_\_\_\_

\_\_\_\_\_  
\_\_\_\_\_



SMOKE & RATED PARTITION ADJACENT TO BEAM

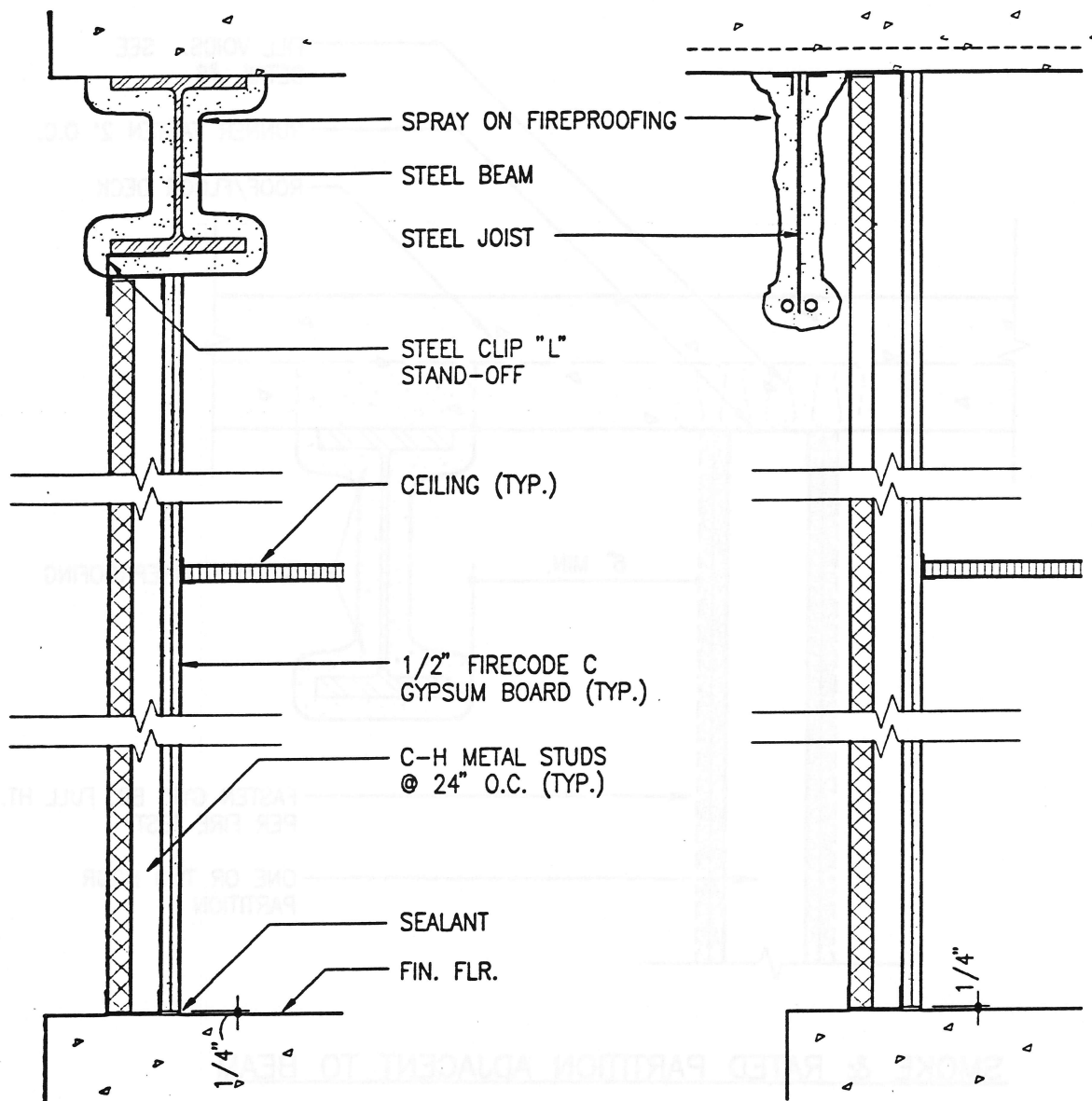
## A.H.C.A. STANDARD DETAIL NO. 9

OFFICE OF PLANS AND CONSTRUCTION  
AGENCY FOR HEALTH CARE ADMINISTRATION  
STATE OF FLORIDA

Issued: Oct. 12, 1993

Revised:

\_\_\_\_\_  
\_\_\_\_\_  
\_\_\_\_\_



**NOTE:**  
STEEL JOIST CANNOT BE  
A PART OF THE RATED  
SEPARATION.

## **TWO - HOUR RATED SHAFT WALLS**

SPRAY FIREPROOFING MUST HAVE 2-HOUR THICKNESS OR GREATER.

### **A.H.C.A. STANDARD DETAIL NO. 10**

OFFICE OF PLANS AND CONSTRUCTION  
AGENCY FOR HEALTH CARE ADMINISTRATION  
STATE OF FLORIDA

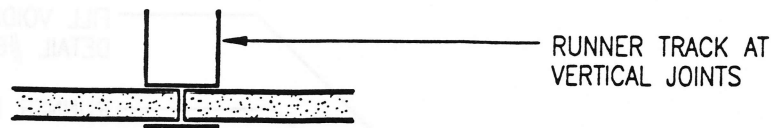
Issued: Oct. 12, 1993

Revised: \_\_\_\_\_

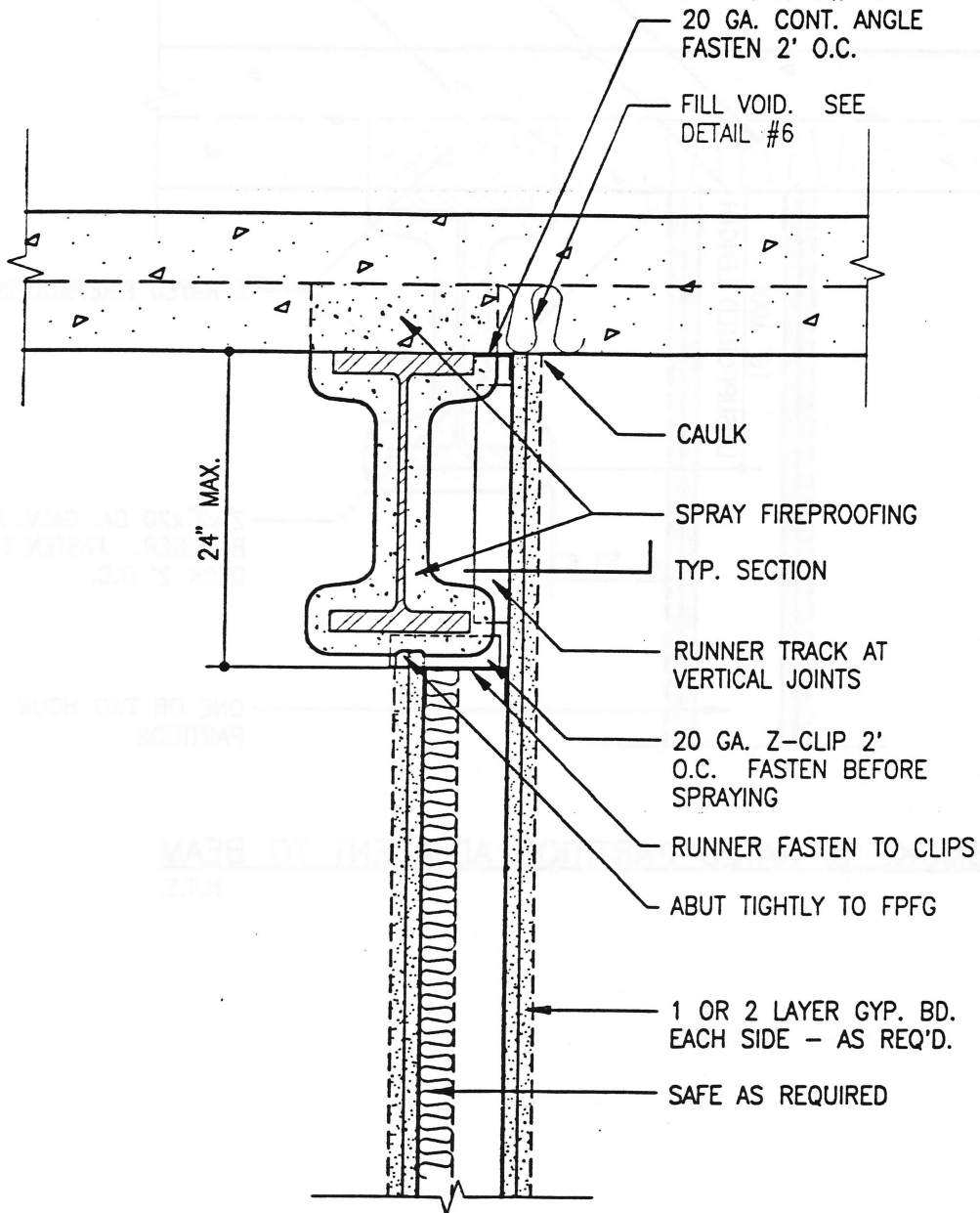
\_\_\_\_\_

\_\_\_\_\_

\_\_\_\_\_



## SECTION - VERTICAL JT. AT BEAM



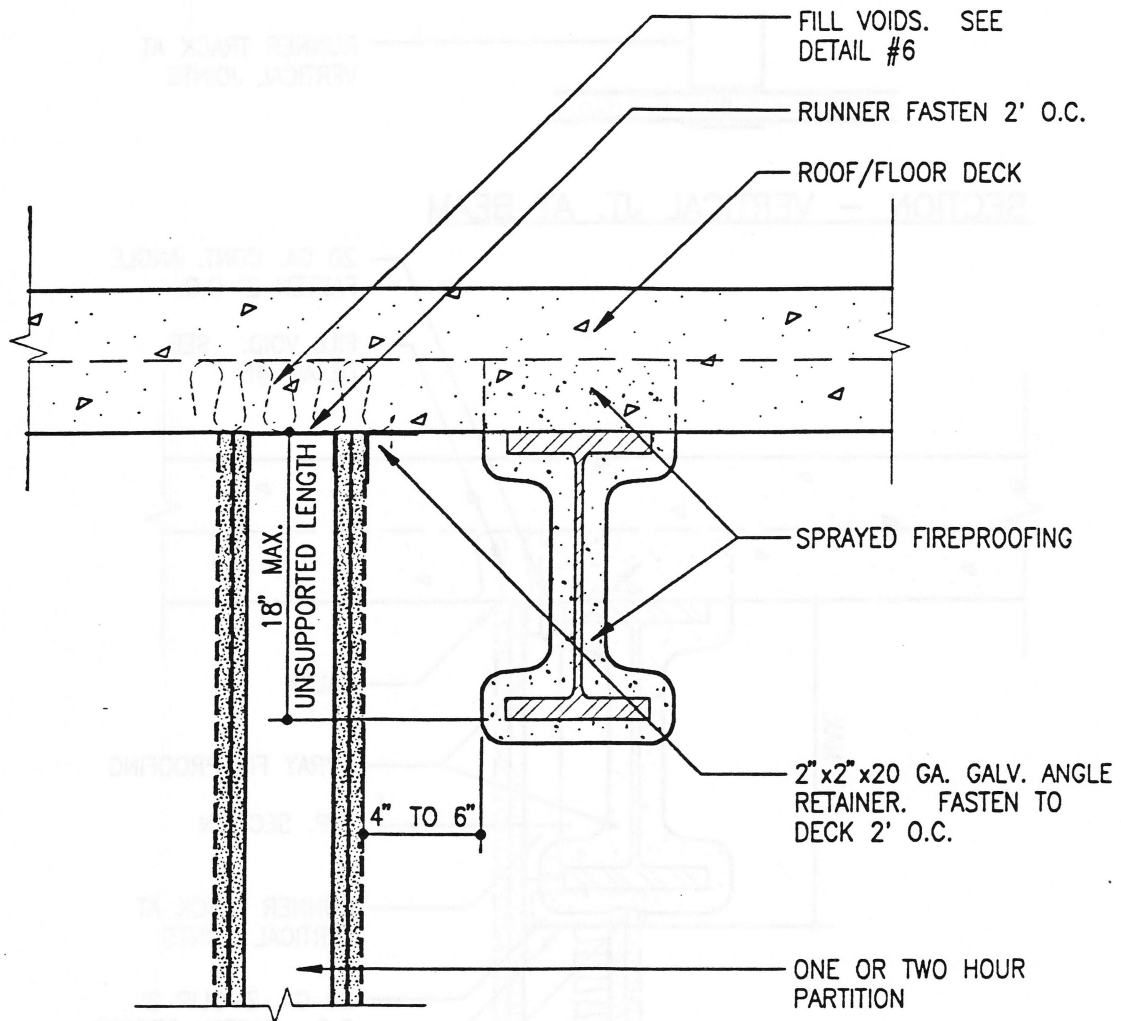
## DETAIL - RATED PARTITION UNDER BEAM

### A.H.C.A. STANDARD DETAIL NO. 11

OFFICE OF PLANS AND CONSTRUCTION  
AGENCY FOR HEALTH CARE ADMINISTRATION  
STATE OF FLORIDA

Issued: Oct. 12, 1993

Revised:

**SMOKE & RATED PARTITION ADJACENT TO BEAM**  
N.T.S.

## A.H.C.A. STANDARD DETAIL NO. 12

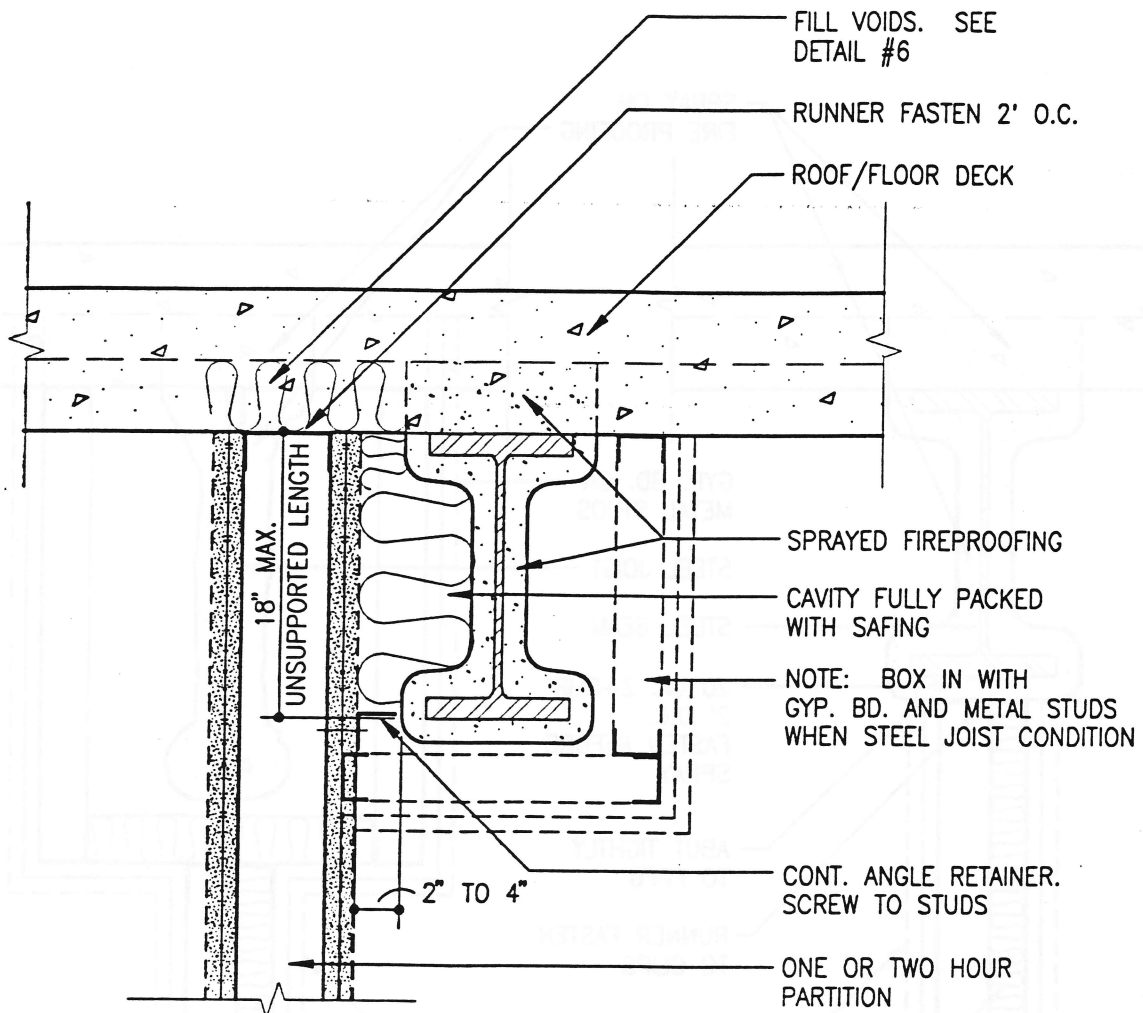
OFFICE OF PLANS AND CONSTRUCTION  
AGENCY FOR HEALTH CARE ADMINISTRATION  
STATE OF FLORIDA

Issued: Oct. 12, 1993

Revised: \_\_\_\_\_

\_\_\_\_\_  
\_\_\_\_\_  
\_\_\_\_\_





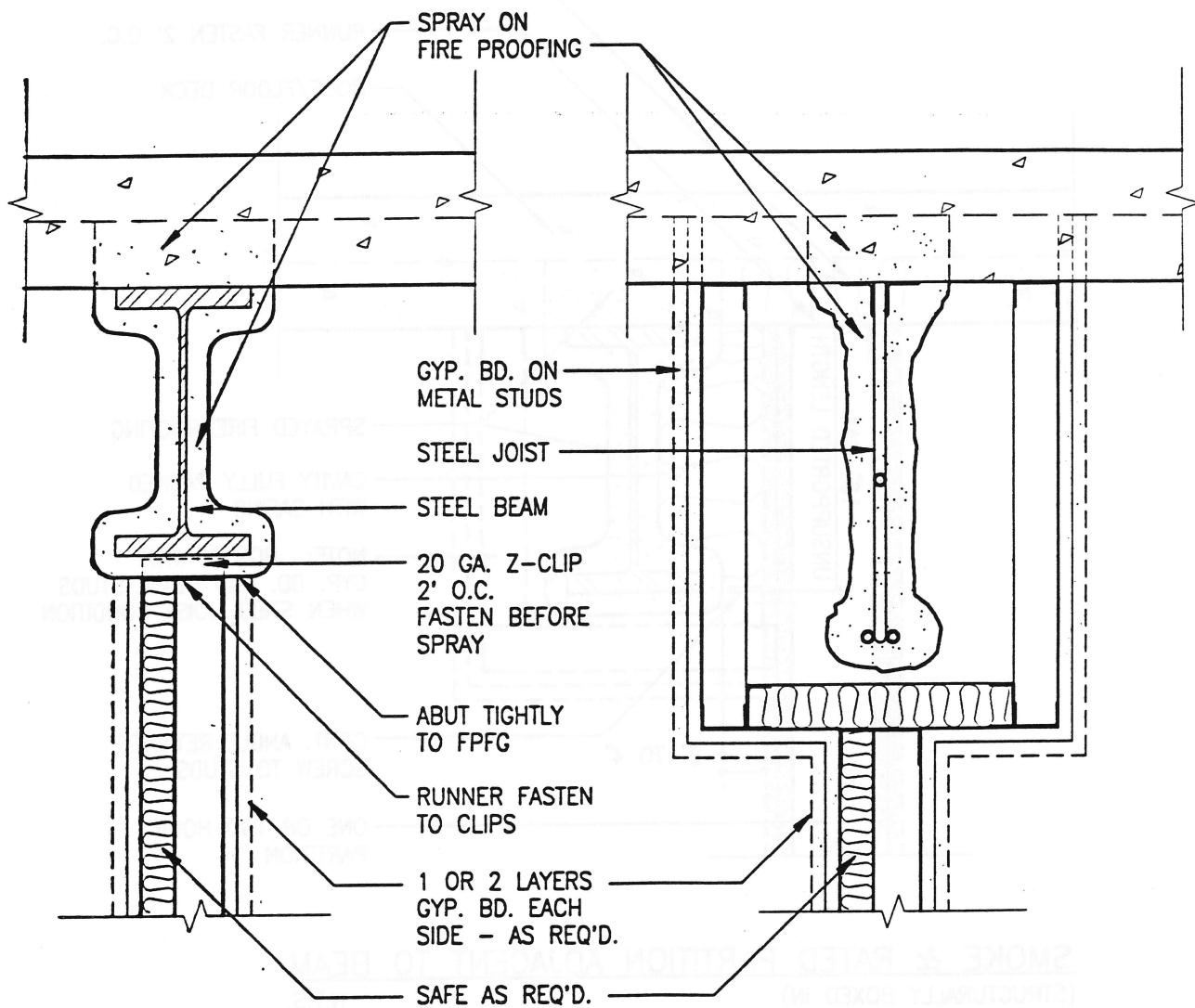
**SMOKE & RATED PARTITION ADJACENT TO BEAM**  
(STRUCTURALLY BOXED IN) N.T.S.

## A.H.C.A. STANDARD DETAIL NO. 13

OFFICE OF PLANS AND CONSTRUCTION  
AGENCY FOR HEALTH CARE ADMINISTRATION  
STATE OF FLORIDA

Issued: Oct. 12, 1993

Revised: \_\_\_\_\_



**RATED PARTITION UNDER BEAM**  
N.T.S.

**RATED PARTITION UNDER JOIST**  
N.T.S.

## A.H.C.A. STANDARD DETAIL NO. 14

OFFICE OF PLANS AND CONSTRUCTION  
AGENCY FOR HEALTH CARE ADMINISTRATION  
STATE OF FLORIDA

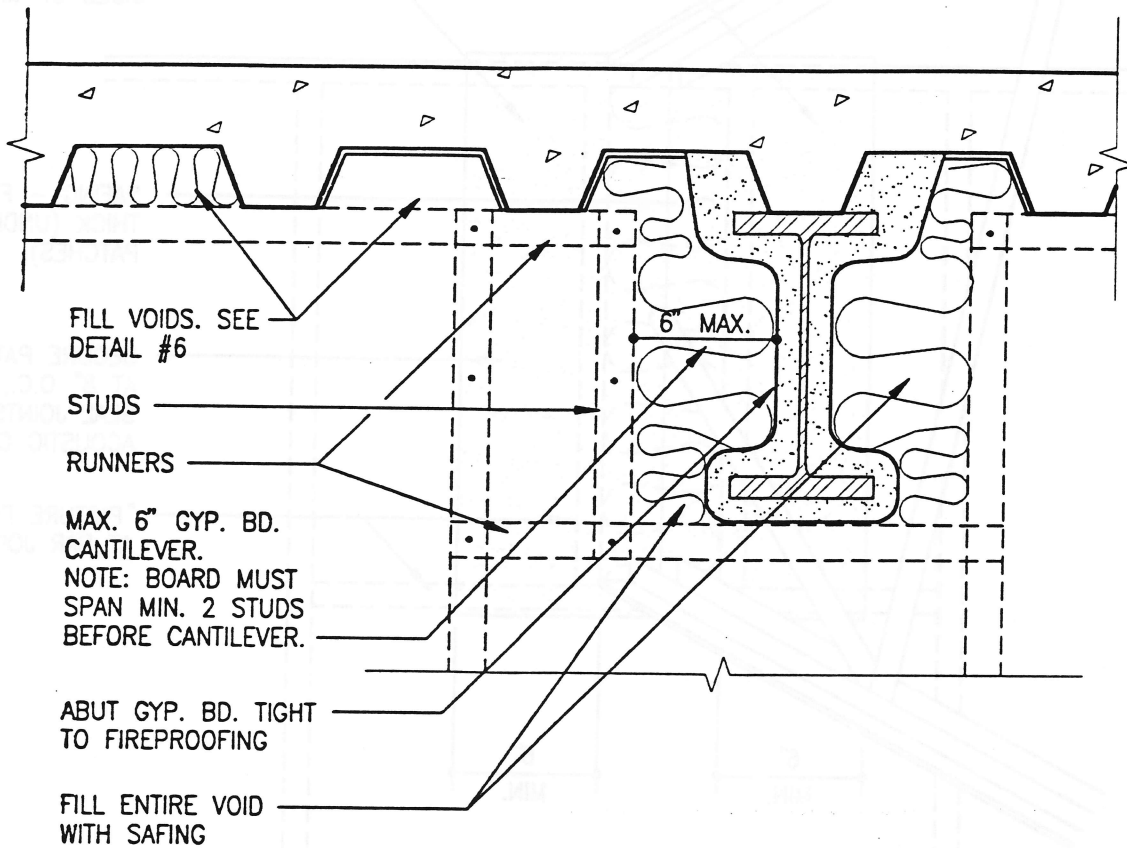
Issued: Oct. 12, 1993

Revised: \_\_\_\_\_

\_\_\_\_\_

\_\_\_\_\_

\_\_\_\_\_



DETAIL - RATED WALL PERPENDICULAR TO BEAM  
N.T.S.

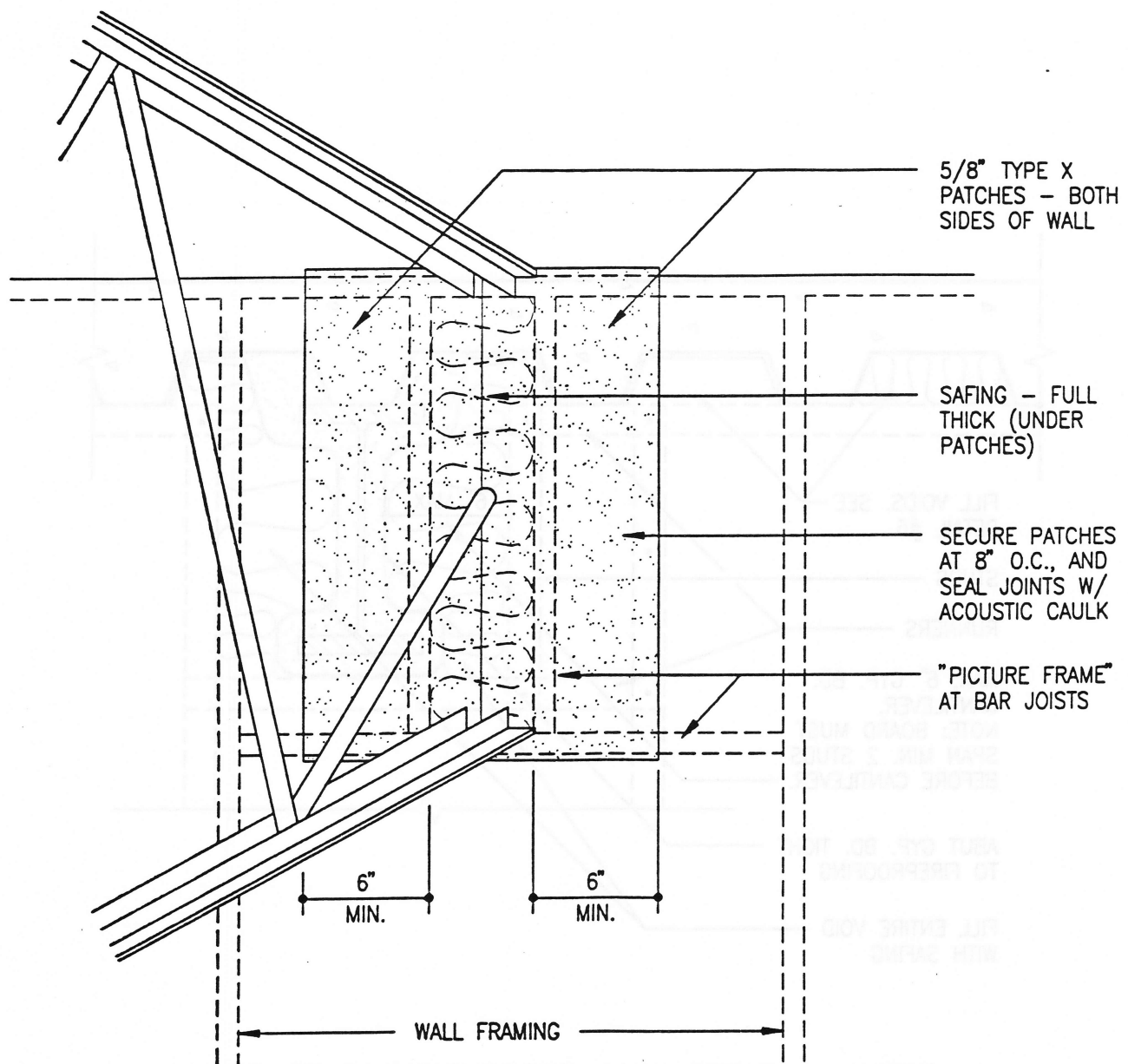
## A.H.C.A. STANDARD DETAIL NO. 15

OFFICE OF PLANS AND CONSTRUCTION  
AGENCY FOR HEALTH CARE ADMINISTRATION  
STATE OF FLORIDA

Issued: Oct. 12, 1993

Revised: \_\_\_\_\_

\_\_\_\_\_



# BLOW OUT PATCH BAR JOIST PENETRATION OF A RATED WALL

N.T.S.

## **A.H.C.A. STANDARD DETAIL NO. 16**

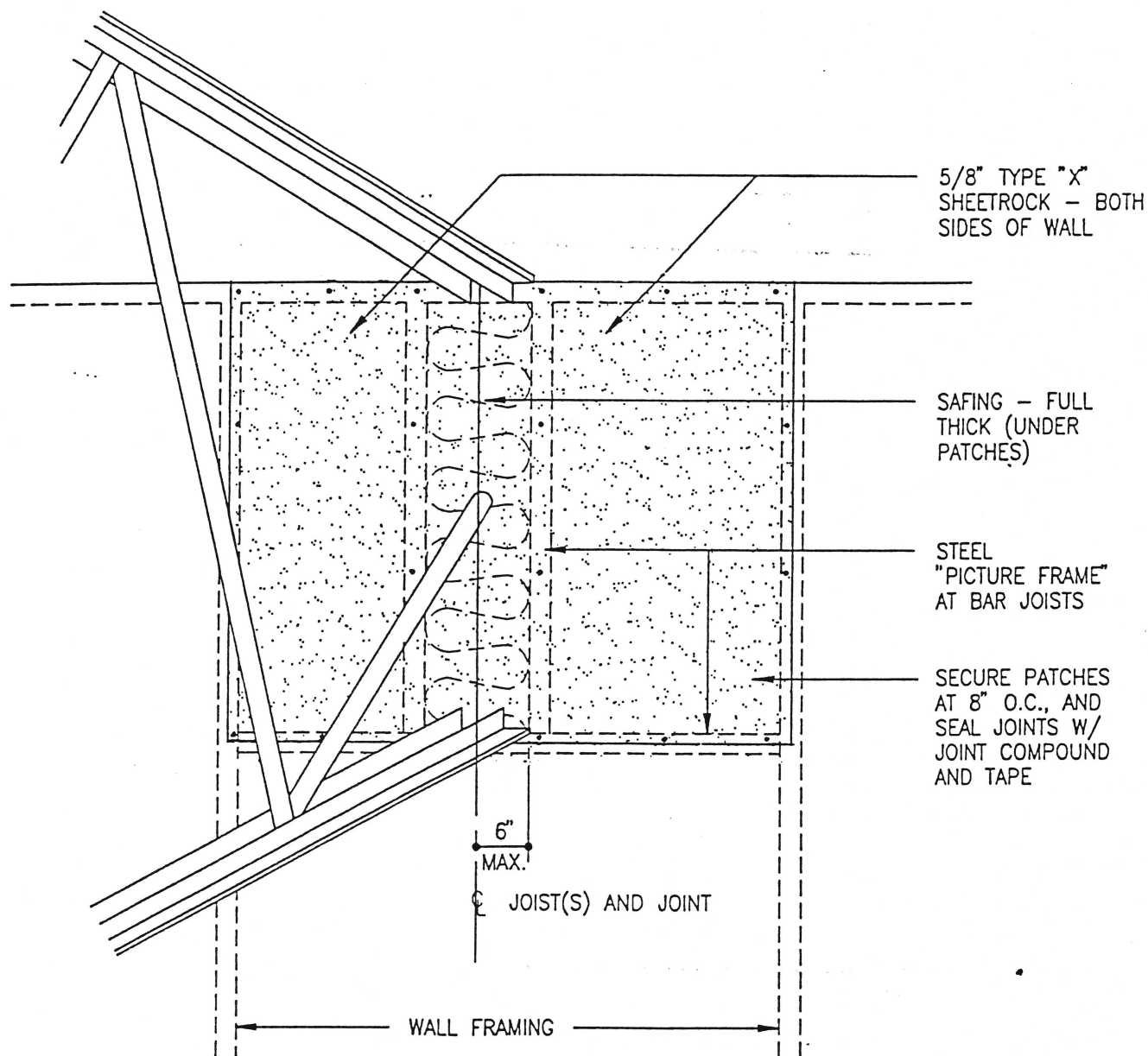
OFFICE OF PLANS AND CONSTRUCTION  
AGENCY FOR HEALTH CARE ADMINISTRATION  
STATE OF FLORIDA

Issued: Oct. 12, 1993

Revised: \_\_\_\_\_

\_\_\_\_\_

\_\_\_\_\_



FLUSH WALL CONSTRUCTION BAR JOIST PENETRATION OF A RATED WALL  
N.T.S.

## A.H.C.A. STANDARD DETAIL NO. 17

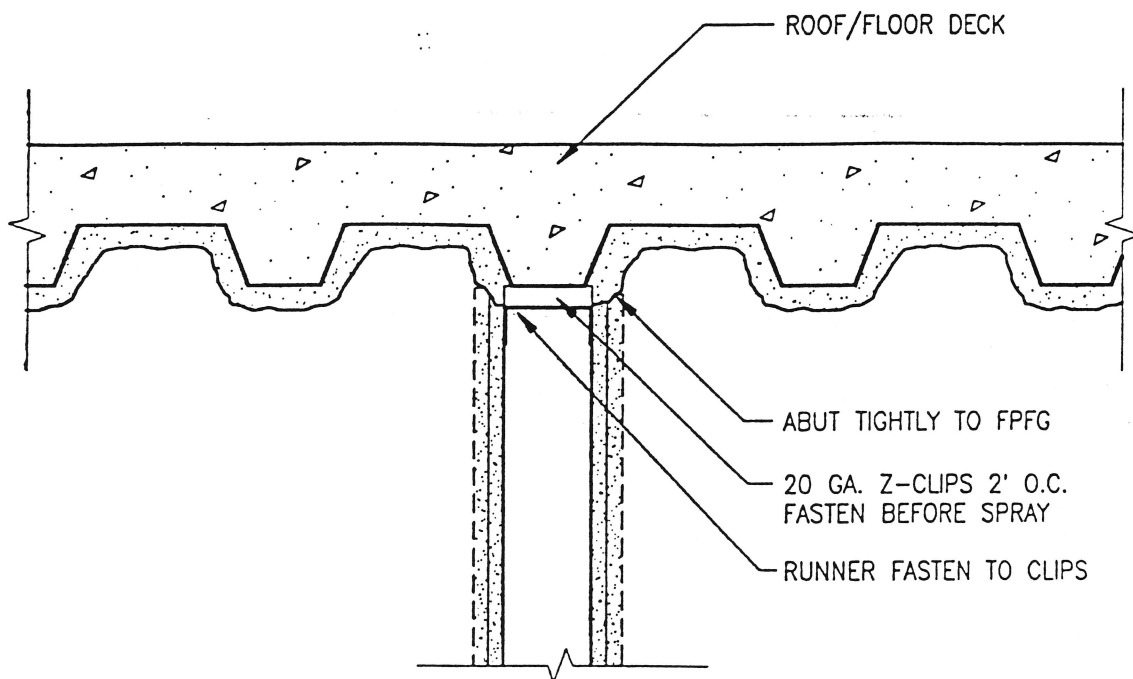
OFFICE OF PLANS AND CONSTRUCTION  
AGENCY FOR HEALTH CARE ADMINISTRATION  
STATE OF FLORIDA

Issued: Oct. 12, 1993

Revised: MAY 5, 1994







TYPICAL RATED WALL PARALLEL TO DECK  
N.T.S.

## A.H.C.A. STANDARD DETAIL NO. 18

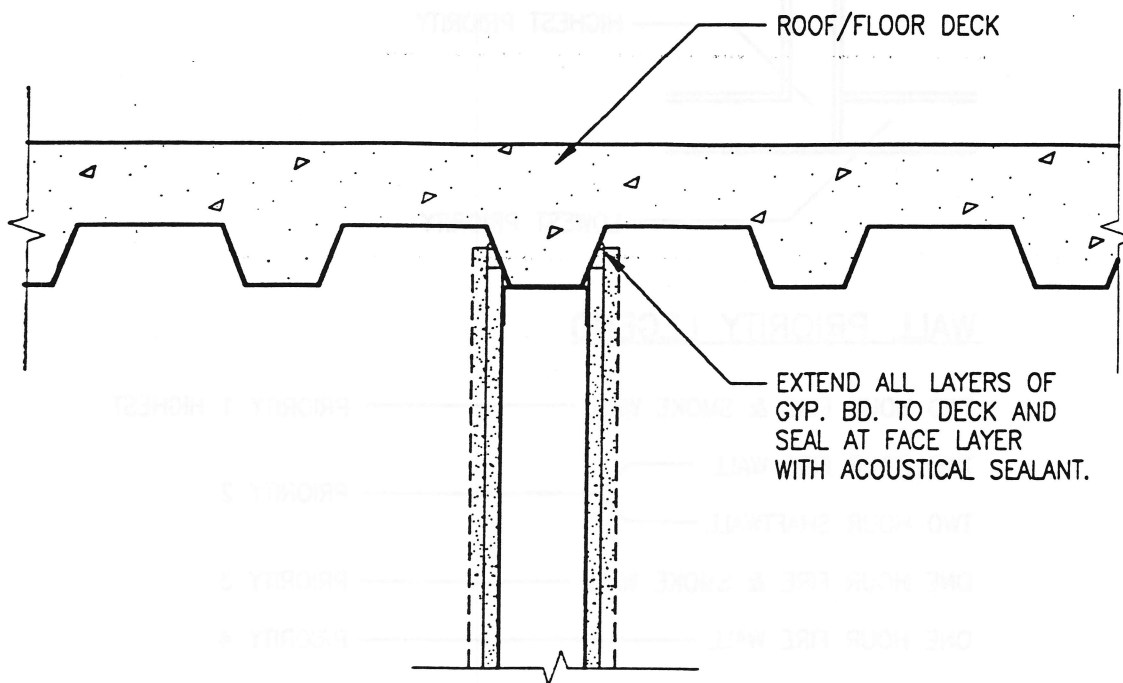
OFFICE OF PLANS AND CONSTRUCTION  
AGENCY FOR HEALTH CARE ADMINISTRATION  
STATE OF FLORIDA

Issued: Oct. 12, 1993

Revised: \_\_\_\_\_

\_\_\_\_\_  
\_\_\_\_\_





TYPICAL RATED WALL PARALLEL TO DECK  
N.T.S.

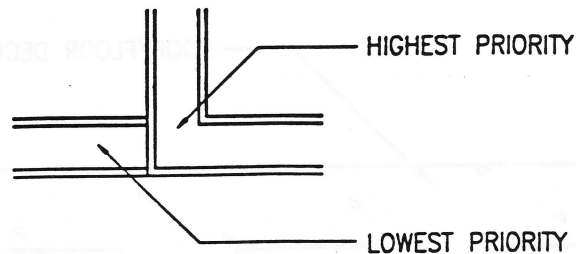
## A.H.C.A. STANDARD DETAIL NO. 19

OFFICE OF PLANS AND CONSTRUCTION  
AGENCY FOR HEALTH CARE ADMINISTRATION  
STATE OF FLORIDA

Issued: Oct. 12, 1993

Revised:

\_\_\_\_\_  
\_\_\_\_\_  
\_\_\_\_\_



### WALL PRIORITY LEGEND

TWO HOUR FIRE & SMOKE WALL	—————	PRIORITY 1 HIGHEST
TWO HOUR FIRE WALL	—————	PRIORITY 2
TWO HOUR SHAFTWALL	—————	
ONE HOUR FIRE & SMOKE WALL	—————	PRIORITY 3
ONE HOUR FIRE WALL	—————	PRIORITY 4
NON-RATED WALL	—————	PRIORITY 5 LOWEST

### NOTES:

1. SCHEDULE CONSTRUCTION OF WALLS ACCORDING TO PRIORITY.
2. ALL PRIORITY 1 THRU 4 WALLS SHOULD BE FRAMED WITH ONE SIDE DRYWALLED AT THE 40% CONSTRUCTION SURVEY.
3. BOTH SIDES OF PRIORITY 1 THRU 4 WALLS SHALL BE SEALED AND STENCILLED AT THE 80% CONSTRUCTION SURVEY.

## **A.H.C.A. STANDARD DETAIL NO. 20**

OFFICE OF PLANS AND CONSTRUCTION  
AGENCY FOR HEALTH CARE ADMINISTRATION  
STATE OF FLORIDA

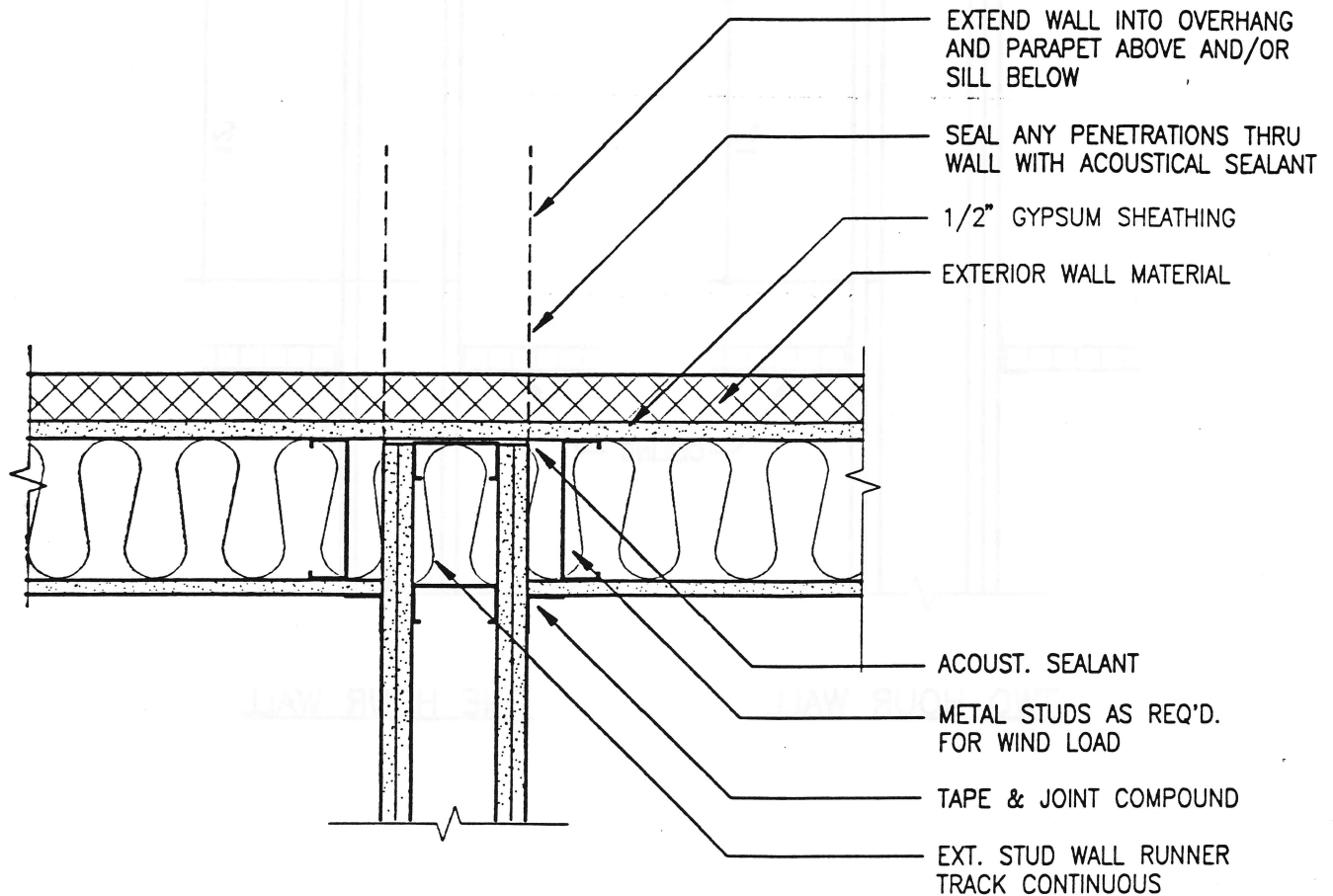
Issued: Oct. 12, 1993

Revised: \_\_\_\_\_

\_\_\_\_\_

\_\_\_\_\_

\_\_\_\_\_



PLAN VIEW — FIRE AND/OR SMOKE WALL AT EXTERIOR WALL

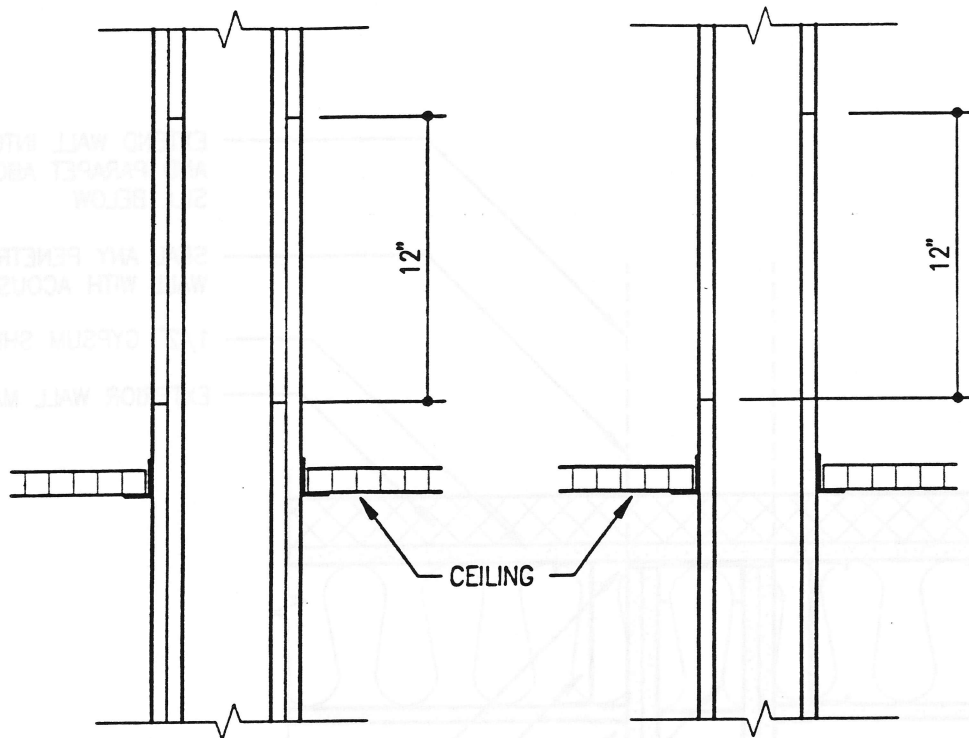
## A.H.C.A. STANDARD DETAIL NO. 21

OFFICE OF PLANS AND CONSTRUCTION  
AGENCY FOR HEALTH CARE ADMINISTRATION  
STATE OF FLORIDA

Issued: Oct. 12, 1993

Revised: \_\_\_\_\_

\_\_\_\_\_  
\_\_\_\_\_  
\_\_\_\_\_



TWO HOUR WALL

ONE HOUR WALL

HORIZONTAL JOINT REQUIREMENTS ABOVE SUSPENDED CEILINGS

NOTES:

1. JOINTS MAY BE OPPOSITE IF SAFEING IS USED IN CAVITY. REF: CEG 8-11-83 CEG 5-9-84
2. JOINTS IN FINISH LAYER TO RECEIVE TAPE AND JOINT COMPOUND

**A.H.C.A. STANDARD DETAIL NO. 22**

OFFICE OF PLANS AND CONSTRUCTION  
AGENCY FOR HEALTH CARE ADMINISTRATION  
STATE OF FLORIDA

Issued: Oct. 12, 1993

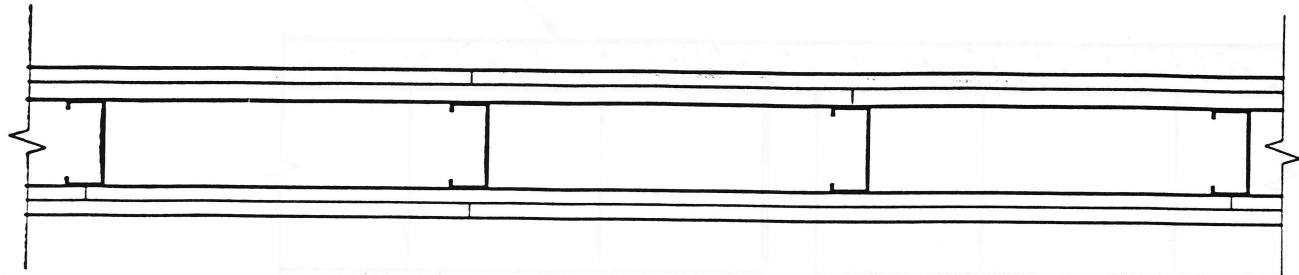
Revised: \_\_\_\_\_

\_\_\_\_\_

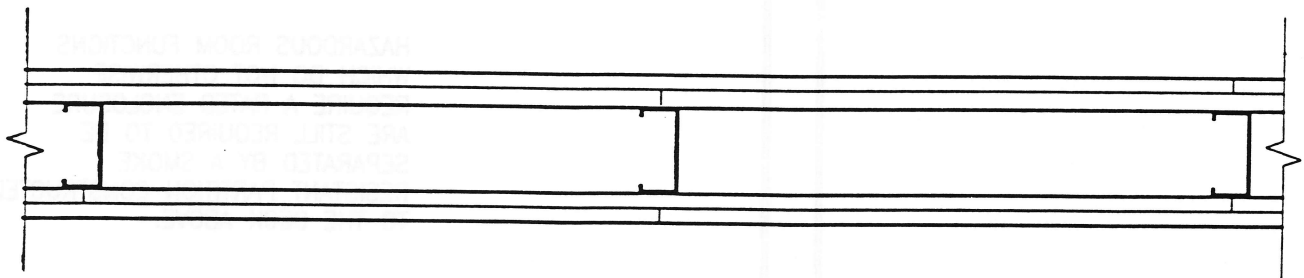
\_\_\_\_\_

\_\_\_\_\_





STUDS 16" O.C.



STUDS 24" O.C.

# PLAN VIEW — TYPICAL JOINT REQUIREMENTS 2 HOUR WALL

N.T.S.

## NOTES:

1. GYPSUM BOARD APPLIED VERTICALLY
2. JOINTS IN FINISH LAYER TO RECEIVE TAPE AND JOINT COMPOUND

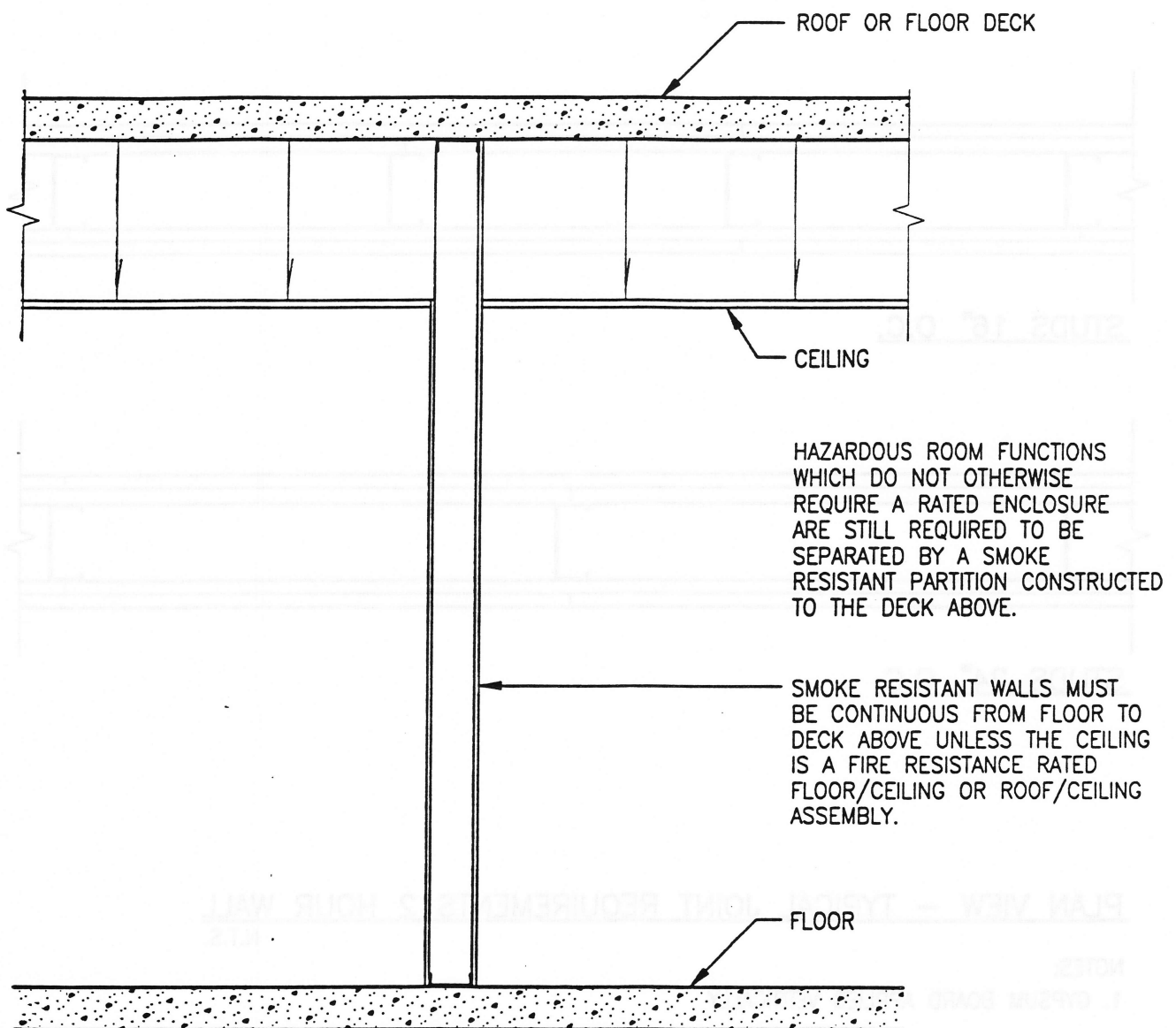
## **A.H.C.A. STANDARD DETAIL NO. 23**

OFFICE OF PLANS AND CONSTRUCTION  
 AGENCY FOR HEALTH CARE ADMINISTRATION  
 STATE OF FLORIDA

Issued: Oct. 12, 1993

Revised: \_\_\_\_\_

\_\_\_\_\_



**SECTION**  
N.T.S.

**SMOKE RESISTANT WALLS AND HAZARDOUS FUNCTION SEPARATION WALLS**  
AS DEFINED IN STANDARD BUILDING CODE 409.1.5.

## A.H.C.A. STANDARD DETAIL NO. 24

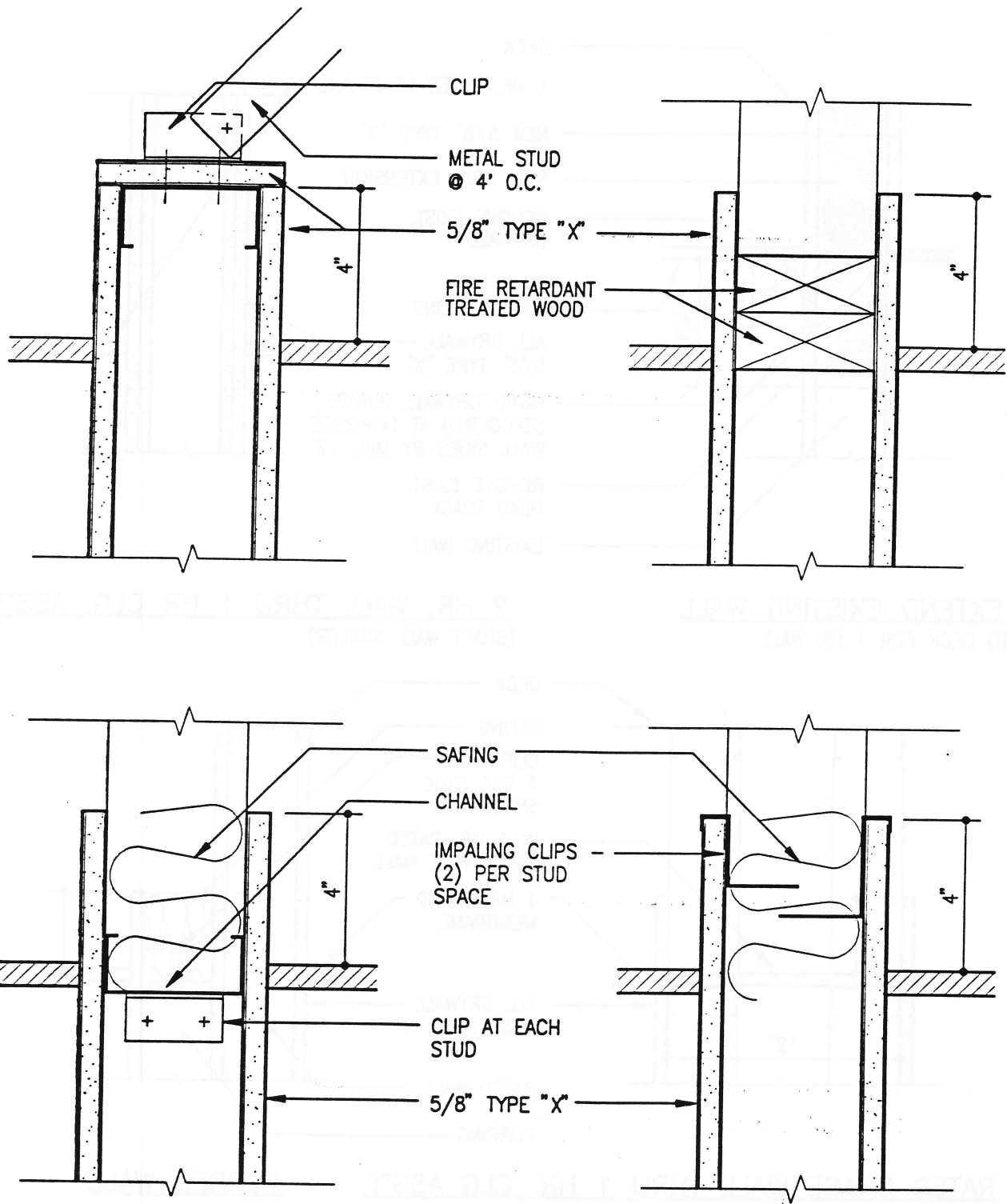
OFFICE OF PLANS AND CONSTRUCTION  
AGENCY FOR HEALTH CARE ADMINISTRATION  
STATE OF FLORIDA

Issued: Oct. 12, 1993

Revised: \_\_\_\_\_

\_\_\_\_\_

\_\_\_\_\_



RATED PARTITION PENETRATION OF 1-HR RATED CEILING ASSEMBLY

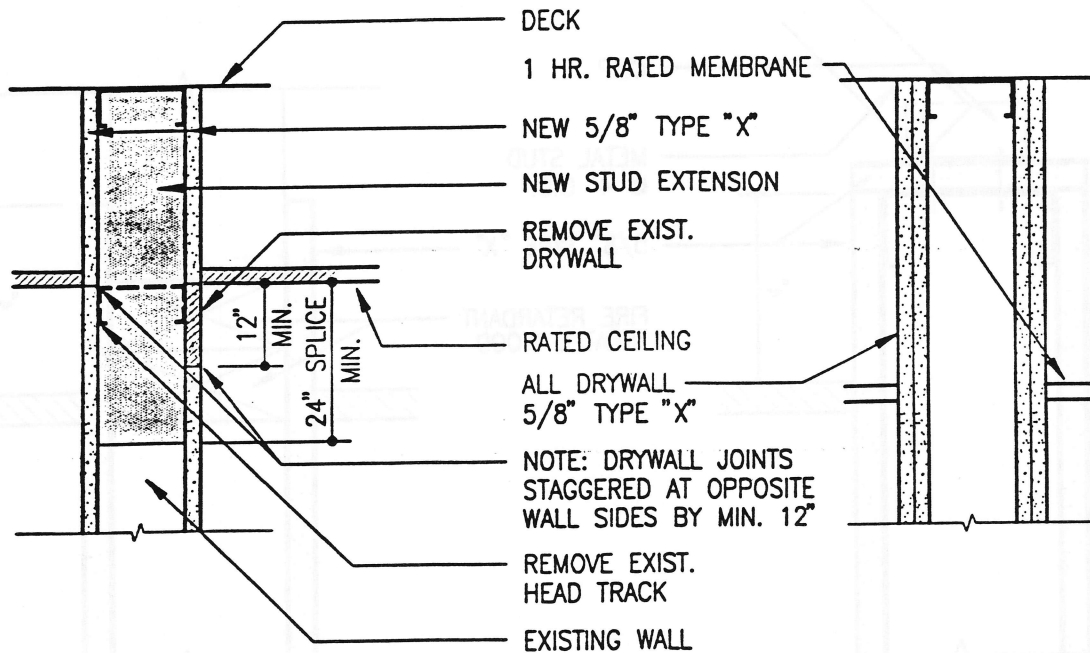
## A.H.C.A. STANDARD DETAIL NO. 25

OFFICE OF PLANS AND CONSTRUCTION  
AGENCY FOR HEALTH CARE ADMINISTRATION  
STATE OF FLORIDA

Issued: Oct. 12, 1993

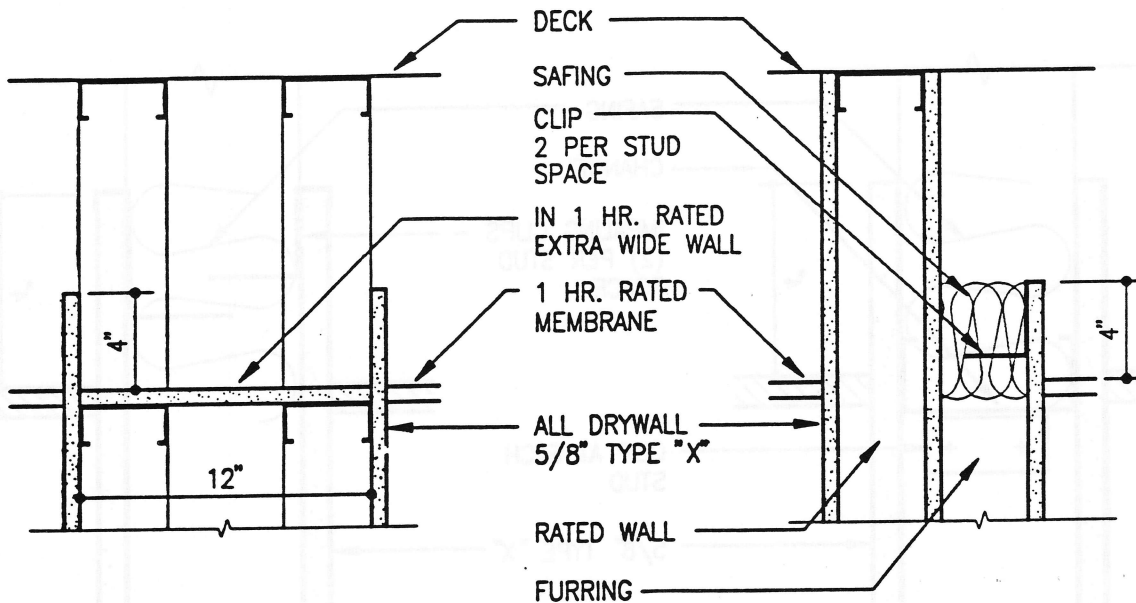
Revised: \_\_\_\_\_

\_\_\_\_\_  
\_\_\_\_\_  
\_\_\_\_\_



EXTEND EXISTING WALL  
TO DECK FOR 1 HR WALL

2 HR. WALL THRU 1 HR CLG. ASS'Y.  
(SHAFT WALL SIMILAR)



RATED CHASE WALL THRU 1 HR. CLG ASS'Y.

FURRED WALL

PARTITION PENETRATION OF 1 HR. RATED MEMBRANE  
N.T.S.

## A.H.C.A. STANDARD DETAIL NO. 26

OFFICE OF PLANS AND CONSTRUCTION  
AGENCY FOR HEALTH CARE ADMINISTRATION  
STATE OF FLORIDA

Issued: Oct. 12, 1993

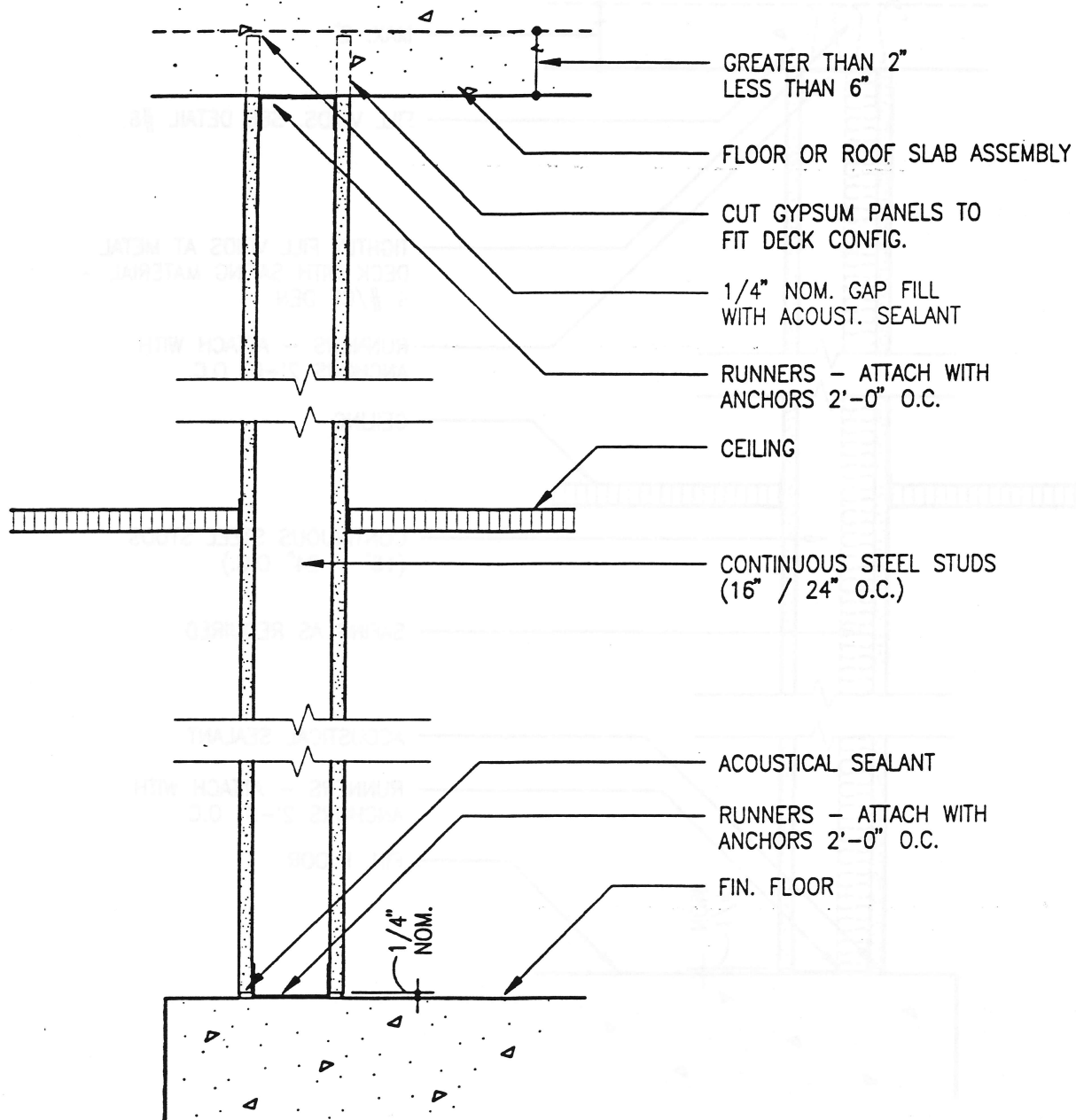
Revised: \_\_\_\_\_

\_\_\_\_\_

\_\_\_\_\_

\_\_\_\_\_

\_\_\_\_\_



**SECTION - SMOKE & ONE-HOUR PARTITION**  
(PERPENDICULAR TO DECK) N.T.S.

TEST REF:  
T-3362-OSU  
T-1174-OSU  
GA-WP-1200

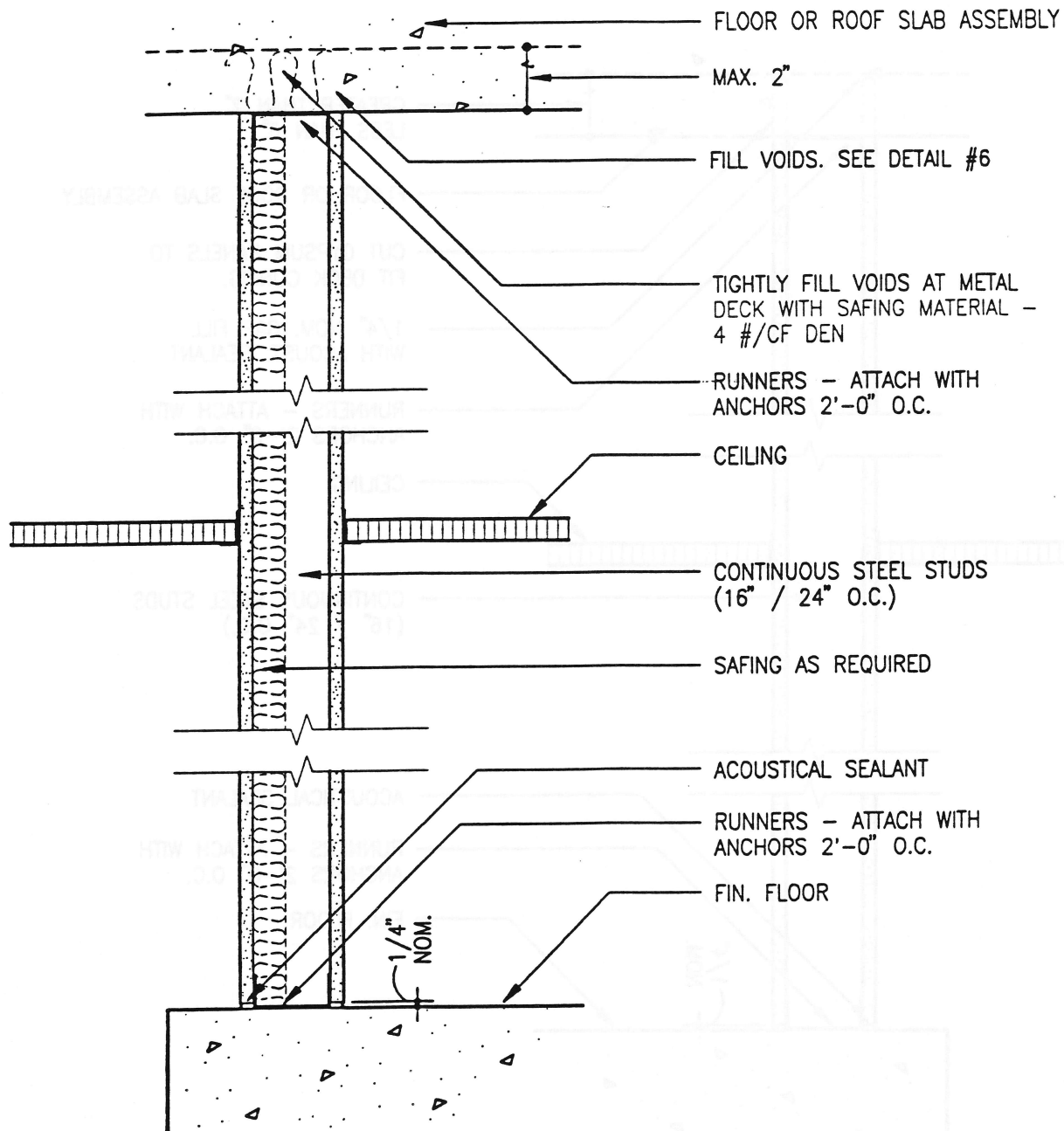
**A.H.C.A. STANDARD DETAIL NO. 27**

OFFICE OF PLANS AND CONSTRUCTION  
AGENCY FOR HEALTH CARE ADMINISTRATION  
STATE OF FLORIDA

Issued: Oct. 12, 1993

Revised: \_\_\_\_\_

\_\_\_\_\_



**SECTION - SMOKE & ONE-HOUR PARTITION**  
 (PERPENDICULAR TO DECK) N.T.S.

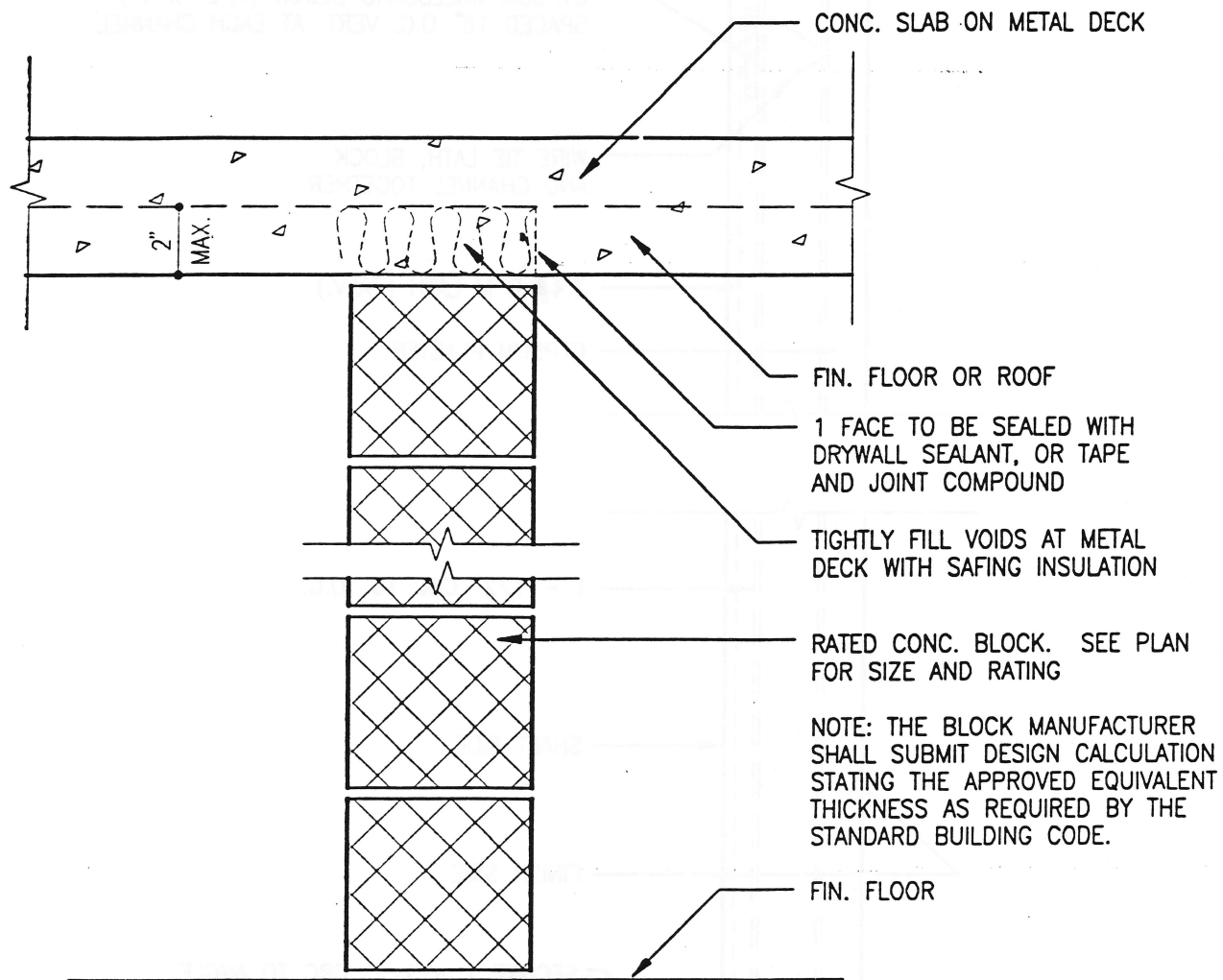
TEST REF:  
 T-3362-OSU  
 T-1174-OSU  
 GA-WP-1200

**A.H.C.A. STANDARD DETAIL NO. 28**

OFFICE OF PLANS AND CONSTRUCTION  
 AGENCY FOR HEALTH CARE ADMINISTRATION  
 STATE OF FLORIDA

Issued: Oct. 12, 1993

Revised: \_\_\_\_\_



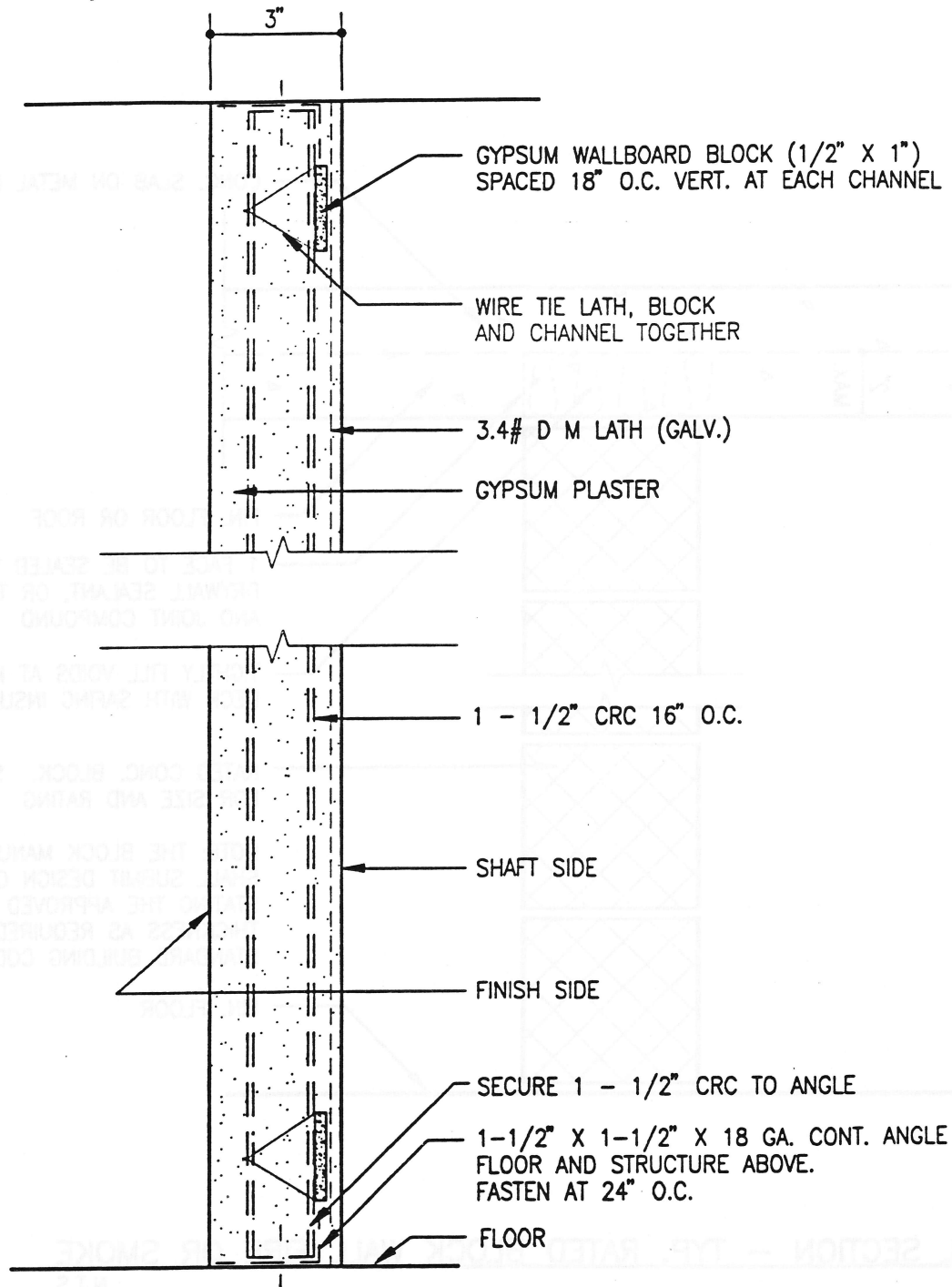
**WALL SECTION – TYP. RATED BLOCK WALL FIRE OR SMOKE**  
N.T.S.

## A.H.C.A. STANDARD DETAIL NO. 29

OFFICE OF PLANS AND CONSTRUCTION  
AGENCY FOR HEALTH CARE ADMINISTRATION  
STATE OF FLORIDA

Issued: Oct. 12, 1993

Revised: \_\_\_\_\_



**2 HOUR PLASTER SHAFTWALL**  
**MAXIMUM HEIGHT 18'-0"**

## A.H.C.A. STANDARD DETAIL NO. 30

OFFICE OF PLANS AND CONSTRUCTION  
 AGENCY FOR HEALTH CARE ADMINISTRATION  
 STATE OF FLORIDA

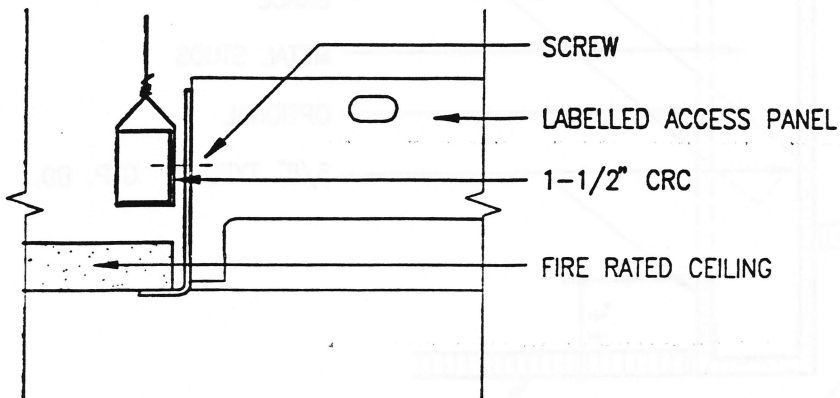
Issued: Oct. 12, 1993

Revised: \_\_\_\_\_

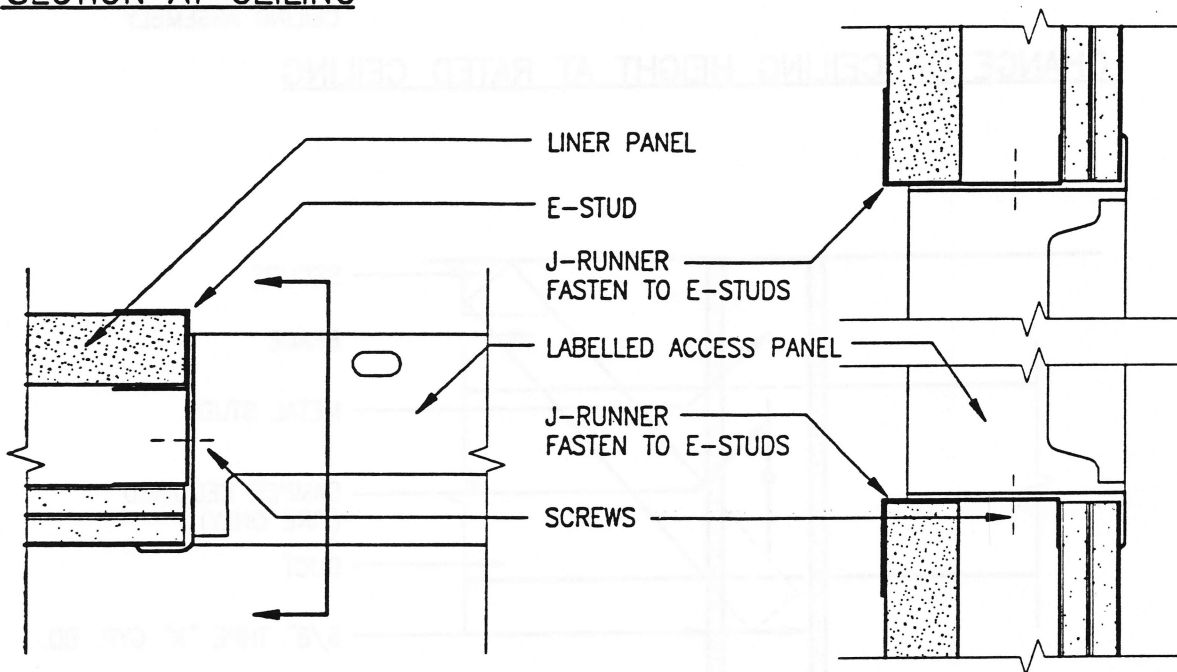
\_\_\_\_\_

\_\_\_\_\_





SECTION AT CEILING



PLAN DETAIL AT SHAFT WALL

SECTION

ACCESS PANEL INSTALLATION  
N.T.S.

**A.H.C.A. STANDARD DETAIL NO. 31**

OFFICE OF PLANS AND CONSTRUCTION  
AGENCY FOR HEALTH CARE ADMINISTRATION  
STATE OF FLORIDA

Issued: Oct. 12, 1993

Revised: \_\_\_\_\_

\_\_\_\_\_

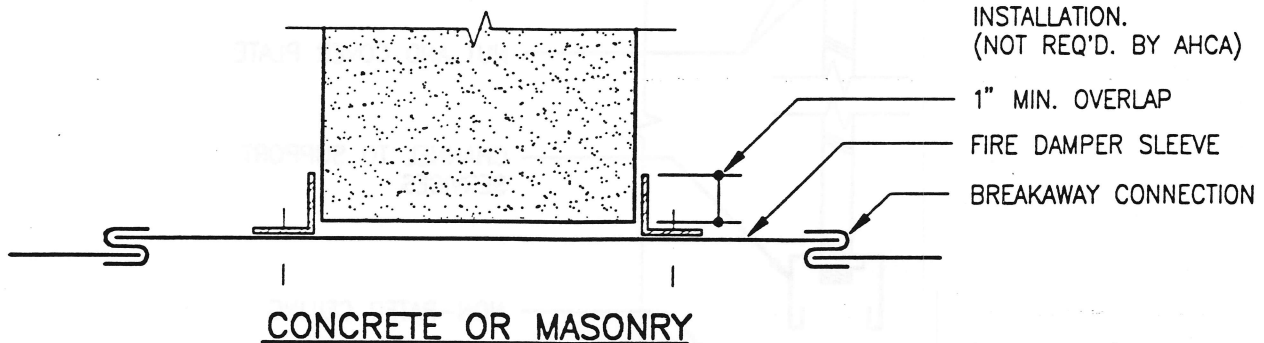
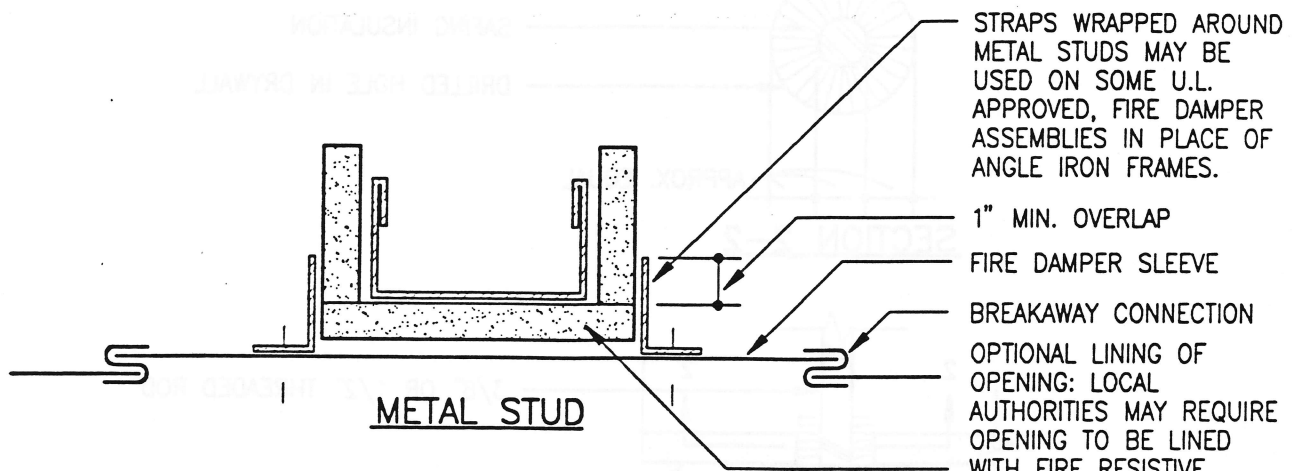
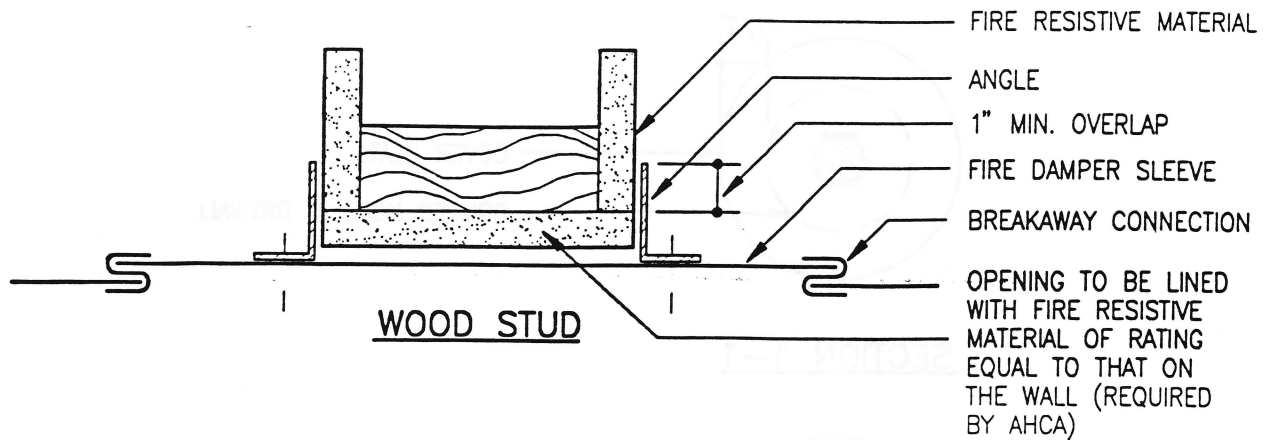
\_\_\_\_\_



NOTE: 2 LAYERS 5/8" TYPE "X" DRYWALL AT 2 HOUR RATED CEILING ASSEMBLY

OFFICE OF PLANS AND CONSTRUCTION  
AGENCY FOR HEALTH CARE ADMINISTRATION  
STATE OF FLORIDA

Revised:



### DAMPER SLEEVE INSTALLATION

N.T.S.

NOTE:  
SPECIFIC FRAMING REQUIREMENTS OF OPENINGS  
SHOULD BE PROVIDED IN THE ARCHITECTURAL  
AND STRUCTURAL DRAWINGS THAT ARE SUBMITTED  
FOR BUILDING PERMITS.

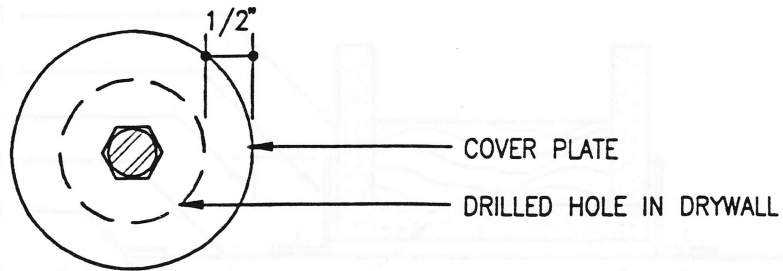
## A.H.C.A. STANDARD DETAIL NO. 33

OFFICE OF PLANS AND CONSTRUCTION  
AGENCY FOR HEALTH CARE ADMINISTRATION  
STATE OF FLORIDA

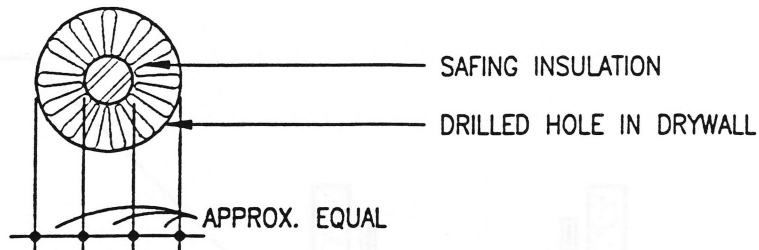
Issued: Oct. 12, 1993

Revised: \_\_\_\_\_

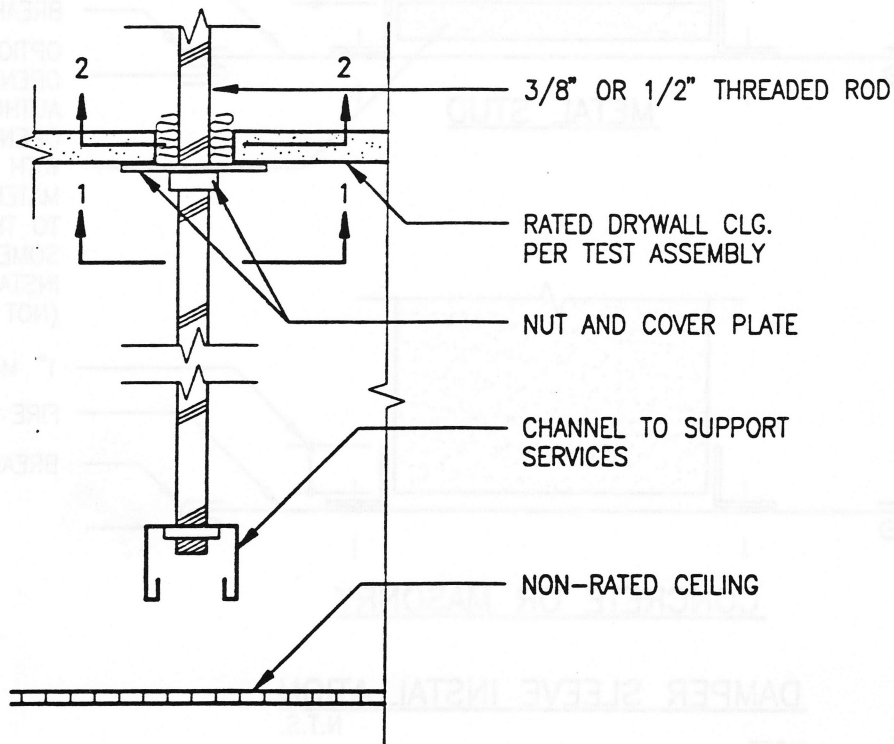
\_\_\_\_\_



**SECTION 1-1**



**SECTION 2-2**



**PENETRATION IN RATED CEILING**  
N.T.S.

## A.H.C.A. STANDARD DETAIL NO. 34

OFFICE OF PLANS AND CONSTRUCTION  
AGENCY FOR HEALTH CARE ADMINISTRATION  
STATE OF FLORIDA

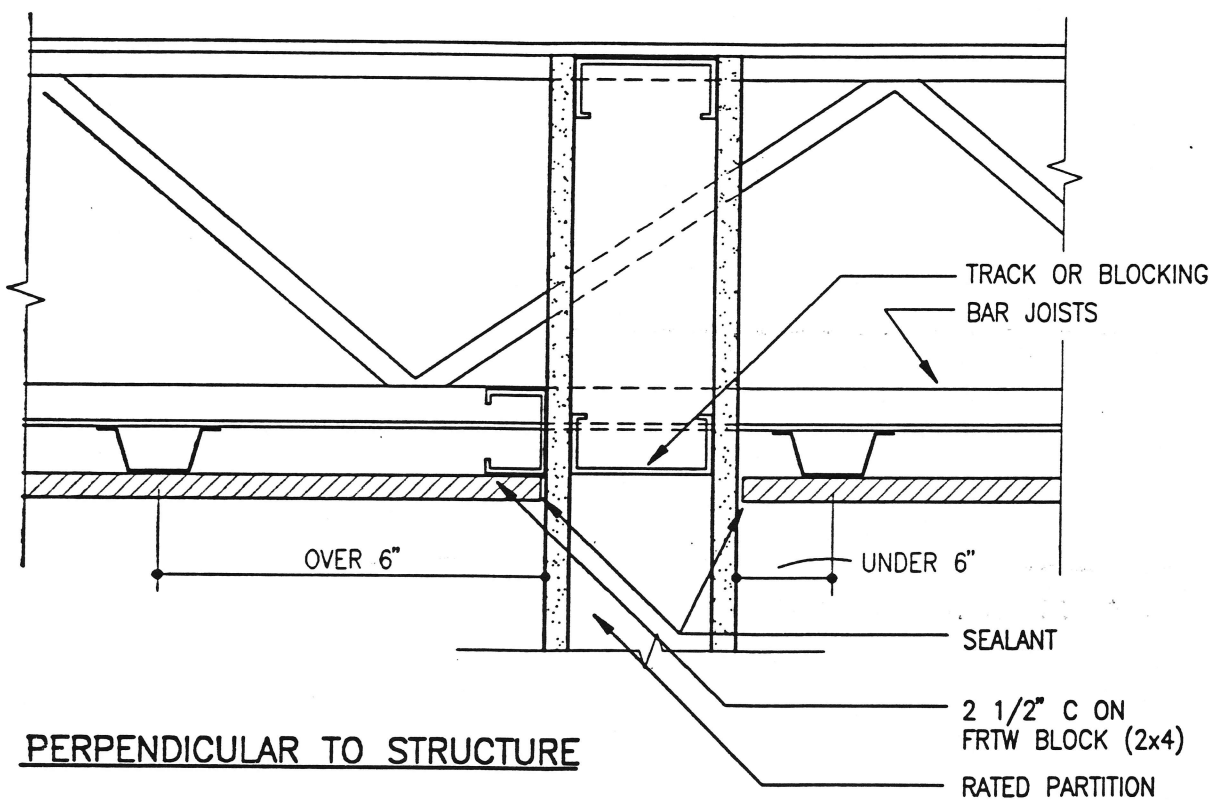
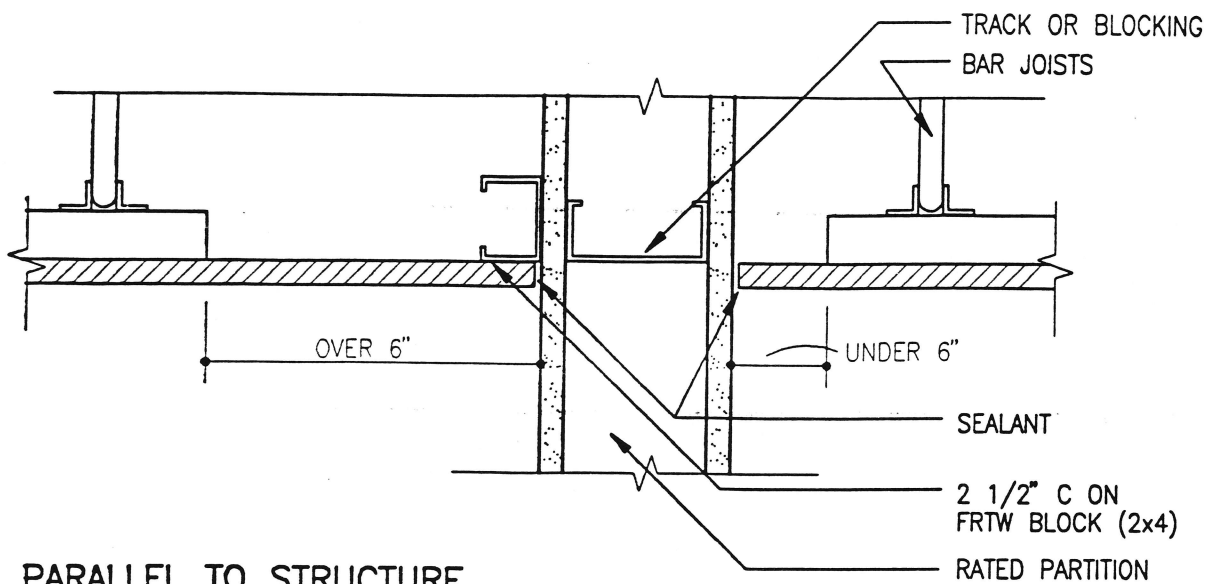
Issued: Oct. 12, 1993

Revised: \_\_\_\_\_

\_\_\_\_\_

\_\_\_\_\_

\_\_\_\_\_



### MEMBRANE EDGE SUPPORT

NOTE: BLOCKING IN WALL IS REQUIRED

## A.H.C.A. STANDARD DETAIL NO. 35

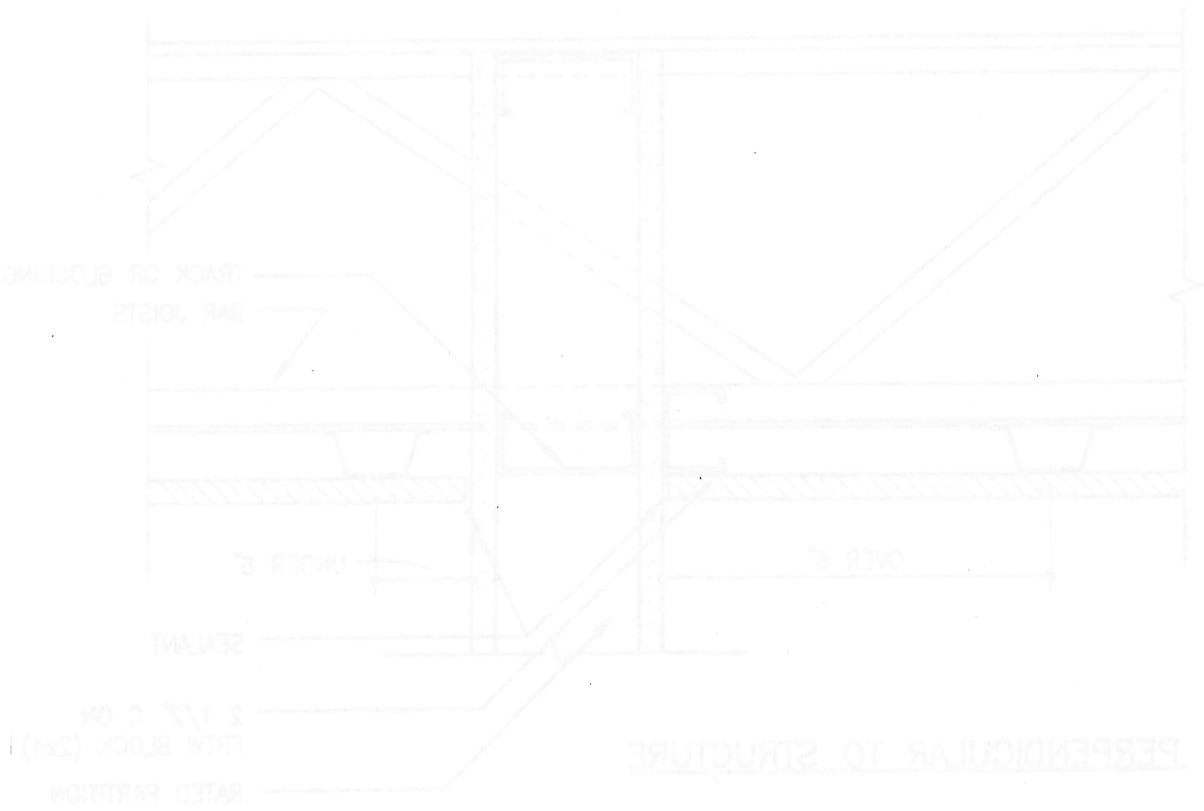
OFFICE OF PLANS AND CONSTRUCTION  
AGENCY FOR HEALTH CARE ADMINISTRATION  
STATE OF FLORIDA

Issued: Oct. 12, 1993

Revised: \_\_\_\_\_  
\_\_\_\_\_

MEMBRANE EDGE SUPPORT  
NOTE: BLOCKING IN WALL IS REQUIRED

PERPENDICULAR TO STRUCTURE



PARALLEL TO STRUCTURE



A.H.C.A. STANDARD DETAIL NO. 35

STATE OF FLORIDA  
AGENCY FOR HEALTH CARE ADMINISTRATION  
OFFICE OF PLANS AND CONSTRUCTION

Issued: Oct. 15, 1993  
Revised:

CLOSE CEILING  
SPACE WITH  
6 MIL POLY.  
SEAL ALL JOINTS  
PENETRATIONS  
& PERIMETER  
WITH DUCT TAPE

CLOSE OPEN  
DUCTS WITH  
6 MIL POLY.  
SEAL WITH  
DUCT TAPE

SEAL AROUND ALL  
PIPE AND DUCT  
PENETRATIONS IN  
THE PARTITION AND  
POLY BARRIER  
WITH DUCT TAPE.

FIRE  
RETARDANT  
WOOD  
NAILER

PLASTER TAPE ALL  
JOINTS. SECURE ALL  
TAPE WITH BAM-TACK  
HIGH TACK SPRAY  
OR EQUAL.

5/8" GYP. BD. ON  
3/8" METAL STUDS (1 HR.)

FINISH OCCUPIED  
SIDE WITH  
GLOSS PAINT

RENOVATION  
SIDE

OCCUPIED  
SIDE

SOUND  
INSULATION  
BATTS

## TYPICAL DUST-PROOF PARTITION



Hammel Green & Abrahamson Inc.  
Architects & Engineers  
1201 Harmon Place  
Minneapolis, Minnesota 55403

SCALE  
3/4" = 1'-0"  
DATE  
DRAWN  
HGA  
CHECKED

A.H.C.A. STANDARD DETAIL NO. 36

OFFICE OF PLANS AND CONSTRUCTION  
AGENCY FOR HEALTH CARE ADMINISTRATION  
STATE OF FLORIDA

